

APA CALIFORNIA NEWS

From the APA California President	P 3
APA California 2016 Conference	P 8
Conference-at-a-Glance	P 14
California Legislative Update	P 23
Historian's Corner	P 26
CPF Seeking Donations	P 27
Planning Services Directory	P 28
APA California Leadership	P 29
APA California Conference Information	P 30

NEXT ISSUE

Healthy Communities

Submissions due Aug 5, see P3 for details



American Planning Association
California Chapter

Making Great Communities Happen

CALIFORNIA PLANNER

Planning News & Updates from APA California

MARCYEBER | VP-Public Information

Planning Your 2016 APA California Conference: Crafting Our Future

As most of you already know, planning is as much an art as it is a science. After all, few would argue that planning public engagement or predicting a community outcome is anything but an visionary endeavor. This year's theme capitalizes on this notion in a city renown for the Arts and Craft Movement. It has been eight years since the last Sate conference was held in the Greater Los Angeles Area and much has changed. For example, one can now travel from Pasadena to the ocean via downtown LA on Metro's light rail system. Pasadena is home to the Bungalow Heaven, a 16-block area Nationally designated area known for the most comprehensive examples of craftsman bungalows. One of the hippest and trendiest dining and shopping districts in the region is Old Town Pasadena with a mix of new and old commercial buildings. And of course a civic center and architecture that rivals any city in the west.

This year's conference as in past years' gatherings will offer ample time to secure your CM credits and engage in professional networking, but also will allow for a bit of fun all with minimal impact to your professional schedule. Further there will be 130 sessions and 25 mobile workshops that will give you a rare opportunity to see local planning efforts at work. But that is not all. There will be dynamic keynote speakers that will enlighten, social events to engage and educational sessions to excite your passion as a planner.

Your Local Host Committee, co-Chaired by **Kevin Keller**, **Meghna Khanna**, and **Melani Smith** along with the Chapter's VP of Conferences, **Betsy McCullough** have been working diligently over the past 18+ months to ensure a successful and memorable conference.

Don't miss this opportunity to learn and share the best the profession has to offer.

I look forward to seeing you in Pasadena. **MY**

INSIDE...

P2 Land Use Policy as a Tool to Facilitate 'Rivierly' Planning

P4 Ballot Initiatives Could Remake Planning in Los Angeles

P6 Mayor Garcetti's Vision for a Smog-Free, Sustainable LA

P8 2016 APA California Conference Highlights

FEATURE | Marc Yeber, ASLA with Ann Scheid

The Art and Craft of Planning in Pasadena

As one of the polycentric centers of the Greater Los Angeles Area, Pasadena has played an important role in the planning and evolution of the region. Long associated as one of the centers for the Arts and Crafts period in the United States, it has a rich history in the American Craftsman style in design and City Beautiful movement in planning.

Defined and anchored by the Arroyo Seco, both literally and figuratively, Pasadena is a city that imbues aesthetic and environmental values often aspired and emulated throughout Southern California. The strong expression for Arts and Crafts in this remote early 20th Century place shaped the progressive community of Pasadena, a community of citizens who migrated from the East and Midwest to seek a better quality of life.

Local architects and designers including architects Charles and Henry Greene (known as Greene + Greene), designer Ernest Batchelder and artist Jean Mannheim all helped to influence both the image and quality that largely characterize Pasadena today. It is home to the **California Institute of Technology**, a leading scientific research center, the **Jet Propulsion**

Laboratory, NASA's arm for the development and operation of robotic spacecraft, the **Norton Simon Museum**, and internationally renowned art museum, the **Art Center College of Design**, a leading school in commercial arts, and of course, the **Tournament of Roses**. But it is the planning of the city that makes it one of the most livable and visited cities in the region.

Pasadena's first city plan, contemplated by its founders in 1874 and incorporated in 1886, was laid out along the edge of the Arroyo Seco, a picturesque natural ravine at the foot of the San Gabriel mountains. The main street, **7th**

Pasadena City Hall. Source: J. Farlow



Pasadena's Historic Gamble House by Green + Greene. Source: P. Durkin



The soft bottom portion of the River bed looking toward downtown Los Angeles. Source: KCET Departures

FEATURE | Theadora B. Trindle, MSc Regional and Urban Planning

Land Use Policy as a Tool to Facilitate ‘Riverly’ Planning

As the City of Los Angeles begins to approach the ten-year anniversary of the Los Angeles River Revitalization Master Plan’s (LARRMP) inception, it’s important to reflect on the progress and future of initiatives pursued to bring the master plan to fruition. Since April 2007, when the LARRMP was adopted by the Los Angeles City Council, governance structures and local and federal policy have evolved to support the long anticipated implementation of the master plan.

Part of this progression requires public sector agencies to rethink current land use tools. Departments such as the Department of City Planning (DCP) and LA RiverWorks have supported the LARRMP’s realization via embedding river-minded planning into existing LA planning frameworks. Efforts like these endeavor to advance public accessibility to and awareness of the LA River.

Often personified as the life-blood or soul of Los Angeles, the river, as a result of numerous activist-driven efforts aimed at increasing awareness of the its socio-ecological history, has begun to emerge as a symbol of Los Angeles’s ethos of reinvention. Los Angeles is located in a Mediterranean area, a biome that accounts for 2 percent of the earth’s landmass. However, the rich biodiversity found in these regions contributes to 20% of the world’s plant species. The River also has played a fundamental role in the establishment of LA as a major urban center. Our city’s original urban development, which led to its eventual incorporation in 1850, transpired as the result of an expansion of agricultural enterprise that depended on the River as a source of irrigation. Three major floods in the early twentieth century motivated the Los Angeles

Flood Control District to support the United States Army Corps of Engineer’s plan, authorized by US Congress, to contain the river in order for it to serve the city as a flood control channel. The river, though it served as an impetus for the city’s original developmental efforts, had been constrained in an effort to protect the urban growth that it had originally supported.

Converting the river into a flood mitigation channel was essential for the preservation of LA’s continued urbanization. However, it effectively isolated the river from the public sphere. To this day, as Senior City Planner Claire Bowin, said, “a lot of people still don’t know about the LA River.” Urban planning policies and tools can play a role in reviving this connection. The reinvention of regulatory land use strategies is integral to establishing increased awareness of and promoting equitable accessibility to the river.

The City of Los Angeles has embraced this tactic since the LARRMP’s adoption. One of the first major initiatives that emerged as a “direct response to the master plan” was an update to the Warner Center Specific Plan, which included the decision to expand this particular Specific Plan area’s boundaries north

“so that it basically hit the south bank of the LA River”. Another was the Cornfields Arroyo Seco Specific Plan (CASP) - an area that captures two “Opportunity Areas” designated by the LARRMP - and its role in elucidating that river adjacent neighborhoods are in need of site-specific consideration with regard to land use. CASP came on the heels of major infrastructural investments, including the Gold Line, and plans for LA Historic Park, in addition to the River beginning to be reimagined as not just a flood control channel but also as an urban ecological and social amenity. As Senior City Planner Claire Bowin notes, in response to these positive investments, “we had to step back as a city and plan for it.” The city wanted to make sure that projects pursued by developers properly complemented these major infrastructural advances. Specific plans are a key tool in existing planning frameworks as they allow the city to mobilize parameters within which a developer can work during the permitting process.

Incorporating these areas into existent procedural frameworks allows city planners to adjust existing tools to river-specific contexts. For instance, both Bowin and Chris Piña, a member of the LA RiverWorks team in the Office of the Mayor, acknowledge the importance of delineating floor area ratio (FAR), height limit, and setback regulations. Around the River, property is available for an expanded list of land uses, but developers are restricted to a 1.5 FAR and can have a maximum of 50 percent lot coverage. In doing so, planners can use tools already available to them to guide river adjacent development. Furthermore, they both emphasize the importance of engaging open space and public plazas as pivotal for distinguishing “riverly” development from development

➔ P7

Friends of the LA River volunteers doing annual River clean-up work near the Sepulveda basin in the northern reach of the River. Source: US Corps of Engineers



CAL PLANNER IFORNIA

CalPlanner is published by the California Chapter of the American Planning Association. APA California members receive this subscription as part of their membership.

PRINCIPAL EDITOR

MARC YEGER, ASLA | VP-Public Information

myplanning@live.com

MANAGING EDITOR

DORINA BLYTHE | Art Director

dorina@granddesigns.us

ADVERTISING

LAURA MURPHY | Display, Job Advertisements

nhe2011@live.com

DISTRIBUTION

FRANCINE FARRELL | Web Manager, Subscriptions,

Website ategoresources@live.com

2016 PRODUCTION SCHEDULE

(tentative)

Issue	Topic	Articles Due	Released
16 04	Healthy Communities	Aug 05	Sept 06
16 05	Public Engagement	Nov 07	Dec 06

The production schedule is subject to change. For article and photo specifications, please see guidelines at www.apacalifornia.org.

CalPlanner ARTICLE SPECS

16|04 THEME: Healthy Communities

LENGTH: 700 (min) to 1,200 (max) words

DOC FORMAT: Working (or open) MS WORD file (.doc or .docx). No PDF's please.

IMAGES: Include captions and sources for all photos, renderings, drawings, maps, diagrams, etc. submitted.

IMAGE FORMAT: 3 X 5 min at 300 dpi (but no larger than 1MB file size) to be emailed as separate attachment(s). In other words, do not embed images in the WORD document.

REMARKS: Article can be written either as a Feature (analysis of the topic), Op-Ed (critique), or First-Person (personal experience with the topic).

FOR QUESTIONS AND ALL SUBMISSIONS,
Please contact Marc Yeber at myplanning@live.com

Additional subscriptions may be purchased for \$22/yr.

Rates for job announcements, display and calling card advertisements can be obtained by visiting APA California at <http://www.apacalifornia.org/?p=15>.

PLANNING SERVICES DIRECTORY

Calling card advertisements support the publication of CalPlanner. For additional information on placing a calling card announcement and to receive format specifications, please contact Laura Murphy at nhe2011@live.com.

HING WONG, AICP | President

Join us in October

Summer is a time for students to take a break from classes and for professional planners to try to leave the office at a reasonable hour so we can all enjoy the nice weather and the daylight. Summer also marks the end of the fiscal year and APA California is keeping the early reistration rates for the 2016 Chapter Conference in effect until the end of July. Now is the time to register as this conference will offer over 120 conference sessions and almost 30 mobile workshops in addition to the pre-conference sessions and the special events/receptions. The conference is the one event for planners from around the state to come together. Attendees will consist of members from the Chapter's eight sections, students from dozens of planning programs throughout the state, the California Planning Foundation, the California Planning Roundtable, the Planner Emeritus Network, the Young Planners Group, etc. This year's event will be in Pasadena on October 22-25 and hosted by the Los Angeles Section.

I would like to share some tidbits about Pasadena that you may or may not know about regarding our host city. Pasadena was Los Angeles' first suburb. The city is home to 16 historically designated districts; in fact, at least 10 percent of the city's 22.5 square miles is historically designated. Even though the city is known as the "City of Roses," it's not an ideal place to grow roses, which need a lot of water. Pasadena's original nickname is "the Crown of the Valley" or Crown City.

Pasadena is probably most famous for The Rose Parade and the Rose Bowl football game. You can tour the floats before and after the parade. When you're up close and personal with them, you'll see that the floats are made out of organic materials like flowers, bark, seeds, and leaves. Another thing many people don't know is that neither the parade nor the game is ever held on



Sunday, due to a long-standing tradition of not wanting to frighten horses hitched outside churches (this goes back over a century) and to avoid competing with NFL games.

A lot of research takes place in Pasadena, given that it is home to the California Institute of Technology (Caltech) and its associated Jet Propulsion Laboratory in partnership with NASA. To date, 34 Caltech alumni and faculty have won a total of 35 Nobel Prizes. A number of significant spacecraft were originated here: Voyager I, Voyager II, and the two Mars rovers, known as Spirit and Opportunity.

Other notable institutions in Pasadena include the Fuller Theological Seminary, the Norton Simon Museum of Art, and the Pacific Asia Museum. The Fuller Theological Seminary is one of the largest multid denominational seminaries in the world. The collections of the Norton Simon Museum of Art include European paintings, tapestries, and sculpture - including an extensive sculpture garden - and contemporary art. USC Pacific Asia Museum houses 15,000 rare and representative examples of art from throughout Asia and the Pacific Islands.

With over 550 eateries and 140,000 residents, Pasadena has more restaurants per capita than New York City. There are three main shopping and dining districts - Old Pasadena, South Lake Avenue, and the Playhouse District - with menus ranging from Indian cuisine and high-end Italian to Middle Eastern, Thai, South American, and Himalayan.

Join us in October for an exciting planning conference where you'll experience tons of learning and networking opportunities. But be sure to experience the host city and what it has to offer for its history, culture, and how it is a livable city with a revitalized commercial core. See you at the conference! **HW**

Norton Simon Museum of Art. Source: Visit Pasadena





Rendering of the proposed Hollywood Palladium project. Source: Stanley Saitowitz / Natoma Architects Inc.

PERSPECTIVE | Josh Stephens

Ballot Initiatives Could Remake Planning in Los Angeles

The number of people who would likely vote in favor of the current system of long-range planning and project approvals in the City of Los Angeles hovers around zero. But that is not exactly the question at hand for Angelenos today.

Originally proposed for this November's ballot and now pushed to the March 2017 ballot, the Neighborhood Integrity Initiative (NII), sponsored by a group called the Coalition to Preserve LA (CPLA), would upend Los Angeles' approach to both project approvals and long-range planning.

Among other provisions, the initiative would effectively place a two-year moratorium on all development that does not conform to adopted plans. It calls for the city to update its Community Plans - of which there are 37 - and forbids the City Council from granting plan amendments, which supporters of the initiative derisively refer to as "spot zoning," to non-conforming projects. The initiative calls for the City to:

- Enact a two-year moratorium on building or demolition permits for projects that do not adhere to existing city planning regulations and/or for which the city granted a General Plan amendment, or zone or height change;
- Permanently halt individual parcel-by-parcel or "spot zone" amendments and/or building exemptions by outlawing amendments intended to approve projects where the approval of such projects would otherwise be inconsistent with the General Plan;
- Requires the city, not developers, to be responsible for preparation of Environmental Impact Reports; and
- Regularly update the city's Community Plans and General Plan -

The Neighborhood Integrity Initiative is not the only major planning initiative that

Angelenos will be considering. Proposed for the November ballot, somewhat as a response to the NII, the Build Better LA Initiative (BBLA) seeks to impose certain restrictions on development in Los Angeles in exchange for, it is hoped, construction of more affordable housing. Sponsored by a range of trade unions, BBLA calls for higher labor standards that would, presumably, favor union workers. The BBLA coalition consists of over 50 labor, housing, and social justice groups, including the LA County Federation of Labor and the Southern California Association of Nonprofit Housing.

That initiative creates incentives to encourage larger developments in appropriate areas, through tools such as density bonuses and reduced parking requirements, and smooth the city's notoriously complex and time-consuming approvals process. It links general plan changes to provision of affordable housing. It includes the following provisions:

- An transit-oriented development incentive that would be available in a one-half mile radius around all major transit stations/stops;
- All general plan amendments and zone changes would be limited to projects that use our affordable housing program and that have local hire and high job standards provisions, including payment of prevailing wages;
- Projects that receive funding from the

Affordable Housing Trust Fund would adhere to job standards

- Would ensure that new Community Plans do not reduce the capacity for creation and preservation of affordable housing and access to local jobs.

These initiatives do not directly oppose each other. But they generally are assumed to appeal to different constituencies and represent differing visions of Los Angeles's future. Both speak to a planning process that is widely considered to be dysfunctional and outdated.

Generations of planners, developers, and stakeholders have decried Los Angeles' planning scheme as inefficient, Byzantine, and unenlightened. Los Angeles' General Plan has not been comprehensively updated since 1946, and its recent pace for updating all the Community Plans - a feature of the General Plan not mandated by the state but rather imposed by the city on itself - is so slow that every living Angeleno will be long gone by the time the job is done. Even the Department of City Planning's own literature refers to its process as "cumbersome."

Of chief concern are what CPLA supporters refer to as "mega-projects" that often include luxury condominiums or high-priced rental housing and clash with their conception of Los Angeles' traditional urban fabric. CPLA hope for the initiative to bring predictability to the city's development process and even help combat the city's notorious shortage of affordable and workforce housing. They say that the current system invites developers to pressure the city to approve larger and more luxurious - and therefore more profitable - projects. If developers know that a parcel is zoned only for a certain type of property, developers will avoid the lengthy negotiation process in favor of simply adhering to statute. (The initiative would not affect ministerial approvals such as variances.)

"After the moratorium ends... everybody will know what's going to happen, and there will be no horrible surprises," said Stewart.

Critics say the NII promotes a regressive vision of Los Angeles as a low-rise, low-density bedroom community when market and cultural forces are promoting density. In so doing, it discounts contemporary planning concepts like smart growth, infrastructure development like subway and light rail lines, as well as cultural shifts that have made urban living attractive once again. While some "mega-projects" have received derision, many of them represent, to planners, the emergence of a more vibrant, more urban Los Angeles.

AP7

“CPLA hope for the initiative to bring predictability to the city's development process and even help combat the city's notorious shortage of affordable and workforce housing.”

PI The Art and Craft of Planning in Pasadena

Park Avenue, took advantage of the natural landscape by preserving existing live oak trees in its landscaped median and dedicated an oak grove in the Arroyo as Live Oak Park. The settlers intended to dedicate themselves to citrus farming, which promised a good income and a pleasant life in an idyllic setting and climate.

By 1900, the town had grown to just over 9,000 residents. Winter visitors drawn to Pasadena by its warm dry climate, hotels, cultural life, and tourist attractions, swelled the population from December through April. The large lots on Park Avenue, renamed Orange Grove Avenue, were developed into grand estates by millionaires from the Midwest such as the Gamble Family (of Proctor & Gamble fame), earning the street the name of “Millionaires’ Row.” In response to growth and in keeping with the progressive values of its residents, Pasadena established two city parks in 1906, one of them on land surrounding the 1890 public library, Pasadena’s earliest civic building. In the same year a street tree planting program was begun. Preservation of the Arroyo began with concerned citizens buying up options on land, creating a vast public park, part of which was to remain natural and part to be devoted to recreation. Activist women’s organizations promoted the preservation of the Arroyo and were in the forefront of civic beautification, cultural and education efforts.

In the early 1900’s, Pasadenans started to discuss the need for a new civic center. Influence by Daniel Burnham’s City Beautiful principles of planning, a second city plan was published in 1915 publication by the Women’s Civic League. While the plan generated much interest and was the subject of discussion for the next eight years, it would not be until 1923

that the plan would be approved and implemented. Known as the Bennett plan for the Chicago firm of Bennett Parsons and Frost, Edward Bennett proposed locating the civic center atop a rise to provide a dramatic approach to the city hall and took advantage of existing buildings, the post office as well as YMCA and YWCA, around which the library, city hall and civic auditorium were arranged. Instead of trying to push diagonals through the existing grid, Bennett instead took advantage of existing streets, which required less land acquisition, making the project more feasible. The new buildings were located in a largely residential neighborhood, which also reduced land costs. In addition, Bennett devised a street plan to improve traffic circulation throughout the city, linking existing streets in the east-west direction and designating a few streets for widening. Bennett proposed a civic center with broad streets bordered by double allées of trees. His vision also encompassed eastern and western entrances to city, linking the civic center axis, Holly Street, and the main street, Colorado Boulevard, with the newly built Colorado Street Bridge over the Arroyo Seco. The bridge, termed “a work of art” by contemporary engineers, provided a dramatic entrance on the west terminating in Carmelita Park, which Bennett designated as the future site of an art museum.

Listed in the National Register of Historic Places Pasadena’s Civic Center continues to be a major California planning achievement, conceived and realized within a decade (1923-1932). Pasadena remains faithful to the plan. In 1988, the City rededicated itself to the Bennett Plan by adopting a master plan that has provided the foundation for City investments of nearly \$400 million, including re-opening the Garfield axis, introducing architecturally

compatible additions to the Civic Auditorium, developing TOD and infill mixed use housing (incorporating adaptive reuse of the historic police building), restoration of City Hall, the Central Library, and the Civic Auditorium as well as the Gas Company, YMCA and Julia Morgan YWCA buildings for civic and community benefit.

In subsequent decades, Pasadena has continued to be the standard bearer in many planning efforts. In 1940, the Arroyo Seco Parkway was completed and connected Pasadena to Downtown Los Angeles. It also marked the first freeway in the west, thereby providing an unimpeded route between the two cities. Furthering the City’s planning evolution, the gift of the Gamble House to the City and USC in 1966 marked the beginning of Pasadena’s reassessment of its architectural legacy and introduced a new era of preservation planning. With the establishment of the Cultural Heritage Commission in 1976, Pasadena became the first city in California to embark on a comprehensive inventory of its historic buildings and in 1981 the Old Pasadena Historic District gave official protection to Pasadena’s historic downtown. A newly formed preservation organization, Pasadena Heritage, nominated the Civic Center District of twelve buildings, to the National Register in 1980. In 1985, the city moved to protect all Greene & Greene buildings in the city, including interiors. Another major legacy of the Arts and Crafts period, Bungalow Heaven, a neighborhood of several hundred bungalows, became a Landmark District in 1989. With more than 30 historic and landmark districts and hundreds of designated historic buildings, Pasadena has become a leader in preservation planning.

Today planning in Pasadena continues to be comprehensive and integrated into the larger metropolitan region. In 2003, planning efforts turned to transit oriented development in connection with the initial leg of Metro Gold Line, a light rail system (once again) connecting the City to downtown Los Angeles. This was followed by the recent extension of the line east to Azusa. Recently, the city was recognized for enacting changes in which local traffic is measured from the number of trips to the number of miles traveled (or VMT). Planning in Pasadena continues to be a robust activity and one that maintains an active civic engagement with community residents. As a result, it is a city that remains a vibrant place for both residents and visitors alike.

Marc Yeber is Principal and Urban Designer for Cont-X Studio concentrating on public realm and private landscape projects. Ann Scheid is a author and historian who has written extensively on Pasadena history.

San Rafael Bridge. Source: J. Farlow



FEATURE | Ashley Atkinson, AICP, Section Director, APA Los Angeles

Mayor Garcetti's Vision for a Smog-Free, Sustainable LA

Matt Petersen succinctly summarizes why Los Angeles' Sustainable City pLAN goes beyond environmental issues to address a big-picture vision: "You can't have a good economy with bad air sending people to the hospital."

Petersen, appointed by Mayor Garcetti in August 2013, is the city's first-ever Chief Sustainability Officer. Previously, in his nearly 20 years as president of Global Green USA, Petersen led pioneering efforts to green schools, affordable housing projects, neighborhoods, and cities including post-Katrina New Orleans. Now, he is charged with shepherding 37 city departments and 4 million Angelenos toward a vision for a cleaner, solar-powered, people-friendly LA that stands in contrast to the traffic-choked, smog-blanketed image of the past.

In early 2014, at a time when many other major cities in the US had already completed climate action plans, Petersen's small Office of Sustainability embarked on what would become the Sustainable City pLAN (read it at plan.lamayor.org). President Barack Obama had recently appointed Mayor Garcetti to his new Task Force on Climate Preparedness and Resilience, and Los Angeles had joined the C40 Cities Climate Leadership Group under previous Mayor Antonio Villaraigosa. The City had demonstrated significant progress on transportation infrastructure and greenhouse gas reduction, but still lacked a comprehensive plan.

“The key has been engaging general managers and CSOs in owning the plan and wanting to see it succeed . . . as well as getting people outside City Hall to take ownership.”

When the Sustainable City pLAN was launched in April 2015, it represented the first comprehensive road map intended to unite LA's many departments, offices, and stakeholders around a far-reaching vision for key aspects of the environment, the economy, and equity - what Petersen calls “the Three Es.”

This “Three E” framework is one to which Petersen says he, and Mayor Garcetti, have long been committed. That commitment produced a plan that, despite skepticism about its broad reach from internal and external stakeholders, reflects the “bad air means a bad economy” ethos.

“You can't have a sustainable community without a focus on economic and equity principles as well as environmental

protection,” Petersen said. “They work together in a synergistic way.”

As such, the pLAN's ambitious goals include not only reducing greenhouse gas emissions below the 1990 baseline by 45 percent by 2025, but also permitting 150,000 new housing units and increasing green jobs by 72,500. The pLAN also touches on aspects of water, solar, energy efficiency, waste, transit, mobility, green investment, resilience, air quality, environmental justice, and livable neighborhoods.

Being so comprehensive, Petersen shared, is “a big lift, but if you can pull it off, it allows for a more strategic approach and better results.”

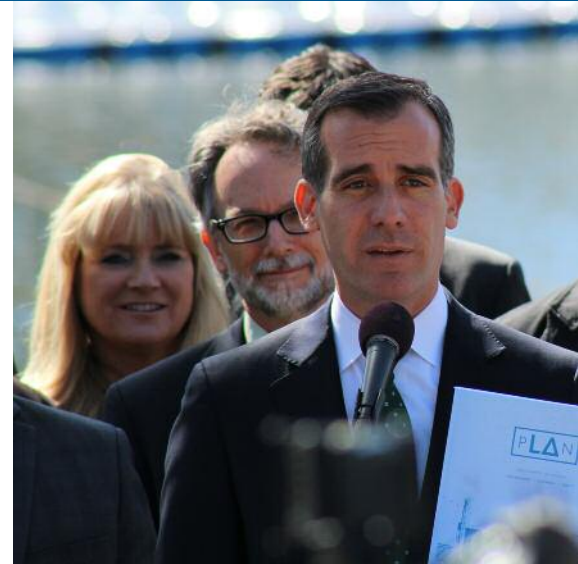
The pLAN follows a classic planning framework including a vision for the LA of twenty years in the future; measurable goals for 2017, 2025, and 2035; strategies to achieve those outcomes; and actionable initiatives.

Preparing the plan included meeting with each department's general manager to engage them and staff in the development of goals and strategies, and initiatives. And one of the first steps in realizing the pLAN was to appoint CSOs in 18 key departments to help shepherd initiatives. “The key has been engaging general

managers and CSOs in owning the plan and wanting to see it succeed,” Petersen said, “as well as getting people outside City Hall to take ownership.”

Organizations, businesses, institutions, and individuals were asked to “Adopt the pLAN” into action for themselves, in ways ranging from 6th graders developing rain gardens at Echo Horizon School to water use reduction goals set by eco-friendly clothing manufacturer Reformation.

Tracking and reporting the metrics that the pLAN intends to influence - and holding staff accountable for outcomes - is key to its success, Petersen said, noting that “being time bound with quantifiable targets has been critical.” For two fiscal years, the Mayor has



Mayor Garcetti discusses the pLAN at Echo Park Lake, Los Angeles. Source: A. Lautanen

used the pLAN's goals to help set priorities for the City's budget. And a year after the plan's launch, its first annual progress report has been released, demonstrating both success as well as highlighting areas that need renewed commitment.

With only one year remaining until the pLAN's first targets in 2017, the annual report indicates that Los Angeles has successfully reduced water usage by 19%, created 9,676 green jobs; permitted more than 37,000 new housing units; and installed 1,024 electric vehicle charging stations. Progress toward other goals, like those for solar generation and storage, has been slower than hoped for - even as Los Angeles has achieved the most installed solar capacity of any US city.

Looking forward to the 2025 targets, the Mayor's Office has begun working with the Olympics Committee to encourage use of the pLAN as the sustainability framework for the 2024 Olympics, if Los Angeles is selected as the host city. The Olympics Committee could use the pLAN to set their own targets and guide engagement efforts.

The City's trained planners, who may work in departments including City Planning, Transportation, and Housing & Community Investment, play a special role in this effort, Petersen said. “A lot of targets in the pLAN relate to land use and zoning, whether we're reducing the number of trips people take, creating livable neighborhoods with more amenities, creating more high quality transit stops with TOD nearby, or increasing housing affordability.”

Planners' “holistic, strategic thinking and the training they get is invaluable to the challenges we're trying to address,” Petersen said.

Ms. Atkinson is an employee in the Mayor's Office of Economic Development

►P2 Land Use Policy as a Tool to Facilitate ‘Riverly’ Planning

elsewhere. Consideration of Specific Plan boundaries and the application of tools such as FAR, expanding permissible uses, and height limits speak to DCP’s usage of existing planning structures in an effort for policy to, as Bowin said, “acknowledge the river”.

A major project on the horizon for LA RiverWorks and DCP is the Los Angeles River Design Guidebook which is being done in partnership with Bloomberg Associates. This document, according to Piña, will “complement the LARRMP and build off the River Improvement Overlay District (RIO).” The guidebook is meant to be a “visual tool” for city planners embarking on Community Plan and General Plan updates as well as a document for the public to use to understand the developmental capacities and possibilities of projects adjacent to a Mediterranean river. Piña notes that the guidebook is meant to set a visual groundwork to ensure that river-adjacent development is “contextual and sensitive to surrounding communities and the LA River.” It will support Community Planners in making updates to plans such as Boyle Heights and Central City North. Furthermore, it will aid DCP’s Re:Code team in determining specifications for a LA “context” for the much anticipated update to Los Angeles’ zoning code.

Bowin and Piña both emphasized the importance of the reinterpretation of existing land use tools to ensure that the river

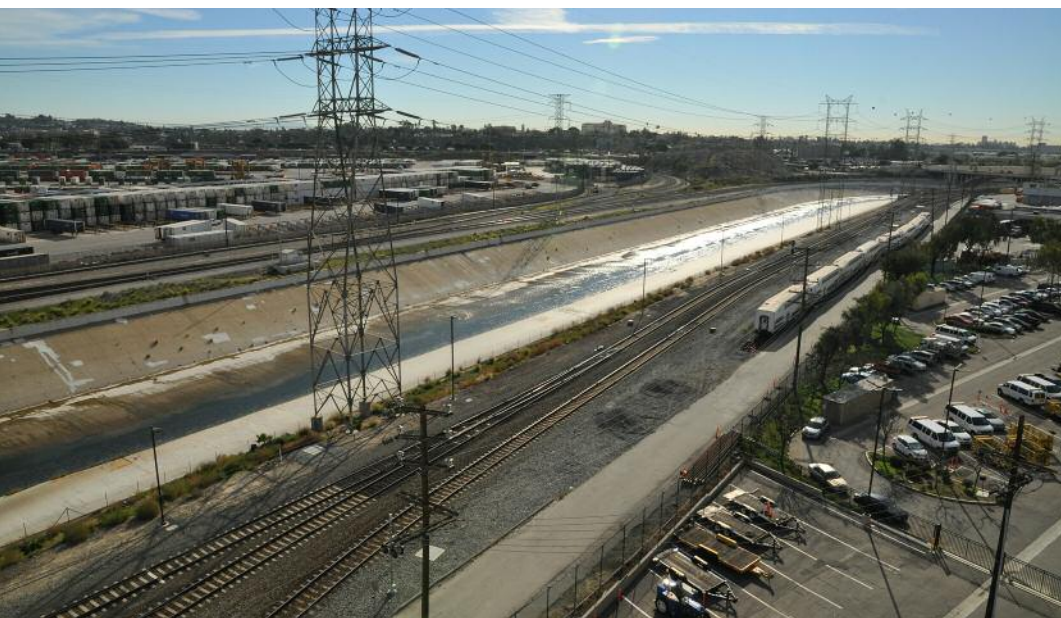
becomes a permanent social and ecological element for consideration in future planning initiatives. Projects such as shifting boundaries and adjusting zoning strategies to the river play a big role in ensuring that it becomes a permanent element of the discourse concerning planning for future development.

DCP’s push to expand the public’s interpretation of accessibility via rethinking already available regulatory tools such as FAR, lot coverage, and height regulations reveals that planning instruments that have historically guided urban development still have a place in contemporary, large-scale capital infrastructure projects. With that said, big questions in regards to embracing new planning tools, such as inclusionary zoning, are controversial yet necessary questions that need to be asked. Equitable accessibility can manifest in a multitude of ways, but tools that guarantee accessibility, protect the river’s ecology, and cull the rise of the speculative real estate market tactics requires the drafting of legislation that offers a discernible stance that the river is a project meant for all. Ultimately, this project poses a unique opportunity to pioneer genuine ecologically considerate policy while simultaneously reinventing the efficacy of tools at the city’s disposal.

Theadora Trindle is an associate Planner at FE Design and Consulting and part of the LA Riverworks team in the Office of Mayor Eric Garcetti.

“Often personified as the life-blood or soul of Los Angeles, the river, as a result of numerous activist-driven efforts aimed at increasing awareness of the its socio-ecological history, has begun to emerge as a symbol of Los Angeles’s ethos of reinvention.”

Current view of the Los Angeles River’s concrete channel and its industrial edges. Source: US Corps of Engineers



Billboard campaign to oppose Hollywood development. SOURCE: A. Lautanen

►P4

Ballot Initiatives Could Remake Planning in Los Angeles

economics backwards, because high land prices reflect a market that is already constrained by antiquated zoning laws. The moratorium and constrained Community Plans could exacerbate an already dire housing shortage and affordability crisis and stall nascent efforts to solve it.

“Densification occurs because of land prices and land consolidation for really big projects,” said Stephanie Pincetl, director of the California Center for Sustainable Communities at UCLA.

City officials maintain that the process is both transparent and in keeping with well-established goals - even if those goals have not yet been codified. In particular, the General Plan Framework, adopted in 1996 and re-adopted in 2001, outlines many of the principles that guide today’s plan amendments.

“Nothing could be further from the truth,” said Bell, regarding CPLA’s characterization of a corrupt planning process. “All of these re-zonings and amendments to the community plans have been consistent with (the General Plan Framework).”

The Planning Department is already attempting to hasten its Community Plan updates through its New Community Plans program. The program kicked off in 2006 but was hampered by the recession. In late 2014, the department announced a renewed effort to update the plans. Bell even authored an institutional mea culpa of sorts before his retirement, acknowledging the department’s prior shortcomings.

Garcetti recently tapped Vince Bertoni to lead the Department of City Planning. The former director of planning in Pasadena - and a former deputy director in Los Angeles - Bertoni is known for championing long-range planning and is expected to jump-start the process in Los Angeles.

A poll conducted by CPLA early on showed 72 percent of respondents in support of the initiative. Polls for the BBLA initiative have not been released as of press time.

Josh Stephens is contributing editor to the California Planning & Development Report. A version of this article originally appeared in the February 2016 edition of the California Planning & Development Report.



KEVIN KELLER, MEGHNA KHANNA, MELANI SMITH | Co-Chairs

Join Us in Pasadena for the 2016 APA California Conference

Hosted by the Los Angeles Section, APA California

In October 2016, the Los Angeles section will host the APA California Conference and proudly welcome planning professionals from across the state to Pasadena, a city famous for events like the Tournament of Roses (a very long parade which one of the conference co-chairs, who shall remain nameless, marched in with a high school band), not to mention the Rose Bowl, the Jet Propulsion Laboratory, and the California Institute of Technology (better known as Caltech, the home of one of our distinguished conference Keynote Speakers, Dr. Lucy Jones.)

Pasadena is a special place for planners to visit, with its "City of Gardens" commitment to making great places, a thriving, revitalized walkable Old Town, leadership in Transit Oriented Development, and preservation of its landmark historic neighborhoods. Pasadena's 1925 Bennett plan envisioned Pasadena as the "Athens of the West."

Our conference theme, "Crafting our Future. The Art of Planning" references the spectacular Arts and Crafts legacy of the City embodied in its fine architecture. The Craftsman style was perfected by Green and Greene and is embodied in the famous Gamble House in Pasadena, among other landmark buildings and can be visited as part of our Mobile Workshops or Orientation Tours. The conference opening reception will be held in the courtyard of the

City's historic City Hall which is a fine example of the California Mediterranean style.

Nestled beneath the mountains, flaunting sun-drenched rose gardens, and showcasing turn-of-the-century architecture, Pasadena is a unique and unforgettable city. We all love to spend time in the City of Pasadena, whether we're visiting the world class museums and gardens, shopping and dining in the historic, walkable AND happening Old Pasadena, or taking in a game or concert at the Rose Bowl, and we know that you'll have a great time here as well. We hear that Pasadena actually incorporated as a City in 1886 in order to abolish saloons and the sale of alcohol in the area. Times have certainly changed, and you'll be glad to know that Old Pasadena has become a major southern California destination for dining, shopping and "entertainment." One of the best examples of downtown revitalization in the country, Old Pasadena features over 200 specialty boutiques and exclusive national retailers in a charming historic setting.



Mayor Terry Tornek, who actually moved to the City in 1982 to accept the position of Planning Director will be welcoming us as part of the conference opening Keynote event. Our conference will be held at the Convention Center in the heart of this legendary pedestrian friendly City, walking distance to all the attractions the City has to offer, and minutes to Downtown LA and the rest of the San Gabriel Valley by Metro Gold Line trains. For you nostalgic folks, the Arroyo Seco Parkway, the first freeway in the west, completed in 1940 is also an option. Beware, though, the historic parkway can be a bit of a "wild ride" for the uninitiated!

Fall will be a great time to appreciate Pasadena's location at the foot of the beautiful San Gabriel Mountains, with the Arroyo Seco walking, hiking and biking trails winding nearby. If you're up early while you are visiting, you might hear and see a flock of the naturalized red-crowned green parrots that travel around the city daily. Legend has it that the parrots originated in a group released in a fire at a local bird farm in the late 1950s.

So, don't miss out!

“Join us to learn, be inspired, surround yourself with passionate people, have fun with friends and colleagues, and get ready to take some great ideas home with you! ”

CONFERENCE HIGHLIGHTS

Mobile Workshops	P 9
Orientation Tour	P 10
Session Info	P 11
Opening Reception	P 11
Keynote Speaker - Roger Egger	P 12
Diversity Summit	P 12
Keynote Speaker - Lucile Jones	P 13
A Message from VP of Conferences	P 13
Conference-at-a-Glance	P 14
In-Depth Pre-Conference Sessions	P 19
Planning Commission and Board Sessions	P 22



MOBILE WORKSHOPS

STEVE GERHARDT AND MICHAEL KENNEDY | Conference Co-Chairs Mobile Workshops

There is Something for Everyone

The Greater Los Angeles metropolitan region is immense, diverse and intriguing. The APA State Conference in Pasadena offers a wide array of mobile workshops to showcase the most interesting projects and neighborhoods. From historic neighborhoods to arts districts, new transit-oriented development and cultural venues and maker spaces. By attending a mobile workshop, you will gain new insights into the Los Angeles you thought you knew. Meet the people who have brought these compelling projects together and gain new insights that you can bring back to your community.

Our 27 mobile workshops will explore local highlights of planning and sites of interest or recent change. Many workshops will be by foot or use public transit to increase their accessibility. The workshops extend into many neighborhoods near Pasadena, and also take you much further afield, as far as the east as the San Gabriel Valley, Long Beach and Wilmington to the south, and Santa Monica to the west, with many exciting destinations including Downtown, the Crenshaw Corridor and Highland Park.



- MW #1 CM 3.0 | PENDING
Explore Downtown Los Angeles' Complete Streets with Bikeshare
- MW #2 CM 3.5 | PENDING
Connecting Communities and Public Transit Through the Connect US Action Plan
- MW #3 CM 4.0 | PENDING
A Walk on Avalon: The Commercial Heart of Wilmington
- MW #4 CM 4.0 | PENDING
Bicycle Mobility in Historic Downtown Long Beach
- MW #5 CM 4.0 | PENDING
Documenting Small Footprint Higher Density Housing Types (Missing Middle Housing) in Pasadena
- MW #6 CM 3.0 | PENDING
Pasadena Historic District Tour
- MW #7 CM 3.0 | PENDING
Brewing the Craft Economy in Los Angeles' Arts District
- MW #8 CM 4.0 | PENDING
The Creative Legacy of the Sunset Strip
- MW #9 CM 4.0 | PENDING
Light Rail to the Beach: Station Area Planning on the Expo-Line
- MW #10 CM 4.0 | PENDING
Exploring Culver City's Transit Oriented Development and the Historic Helms Bakery District
- MW #11 CM 4.0 | PENDING
Boyle Heights Joint Development: A Collaborative TOD Process
- MW #12 CM 3.0 | PENDING
94 Years of Planning Pasadena's Iconic Civic Center
- MW #13 CM 4.5 | PENDING
The Crenshaw Corridor: Leveraging Public Investments to Implement Local Visions for Transit-Oriented Communities

- MW #14 CM 4.5 | PENDING
Master Planning the NBCUniversal Themepark and Campus
- MW #15 CM 4.0 | PENDING
Los Angeles River Revitalization Bicycle Tour
- MW #16 CM 4.0 | PENDING
Re-invisioning a Transfer Station as Gateway to a Transit-Oriented Community
- MW #17 CM 4.0 | PENDING
Balancing Preservation and Change in Pasadena and Los Angeles
- MW #18 CM 2.5 | PENDING
Downtown Glendale: Planning Animated
- MW #19 CM 2.0 | PENDING
Old Pasadena: Turning Small Change into Big Dollars - Redirecting Local Parking Revenue
- MW #20 CM 2.5 | PENDING
Reinventing City Life: Seeds of Change at Los Angeles Eco-Village
- MW #21 CM 3.0 | PENDING
South Park: Turning Parking Lots Into Paradise
- MW #22 CM 3.0 | PENDING
The Art, Architecture and History of the Arroyo Seco
- MW #23 CM 3.0 | PENDING
The Nuts and Bolts of the Foothill Gold Line Extension
- MW #24 CM 3.0 | PENDING
Burbank Production Studios Tour
- MW #25 CM 3.0 | PENDING
Los Angeles' Olympic Legacy
- MW #26 CM 2.5 | PENDING
Rose Bowl: Managing Events to Reduce Community Impacts
- MW #27 CM 3.0 | PENDING
San Gabriel Valley Chinese Food and Culture Tour

We look forward to sharing the best our region has to offer with you in October!

ORIENTATION TOUR

NICHOLAS P. MARICICH | Chair, Orientation Tour

Local Planners Lead the “Arroyos and Foothills” Orientation Tour

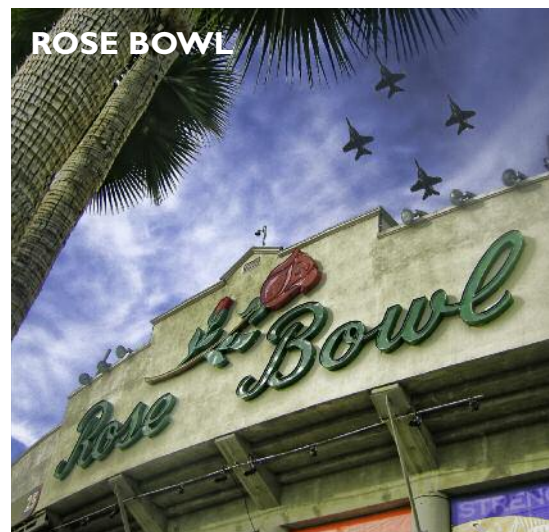
For the first time ever, the APA California Conference this October will include an Orientation Tour! The “Arroyos and Foothills” bus tour will be led by local planners and offered on both Saturday and Sunday to provide participants with an overview of Pasadena, Northeast Los Angeles, and the San Gabriel Valley. This tour will focus on the intriguing past, present, and future of Pasadena and its neighboring communities, including San Gabriel, Altadena, Highland Park, San Marino, and more.

Notable points of interest along the tour route will include:

- **Rose Bowl** - Set in the beautiful Arroyo Seco at the foothills of the San Gabriel Mountains, the Rose Bowl is one of the most famous sporting venues in the country. Built in 1922, it is a designated National Historic Landmark that has a storied place in American sports, most notably as host to the annual New Year’s Day Rose Bowl football game.
- **Mission San Gabriel** - Founded in 1771, the Mission San Gabriel Arcángel was established as the 4th of 21 Spanish missions in California and is located in the present day city of San Gabriel. The San Gabriel Mission Church was built of cut stone, brick and mortar (1791-1805), and is the oldest structure of its kind south of Monterey.

- **Santa Anita Park** - Santa Anita Park is a world-renowned thoroughbred racetrack located in the city of Arcadia. Dating to the early 1900s, Santa Anita played a pioneering role in early horse racing in California, and later became infamous as the largest Assembly Center for Japanese American internment during World War II. Due to its architectural and historical significance, the 300-acre site has been identified as eligible for listing in the National Register of Historic Places.
- **Metro Gold Line Foothill Extension** - Opened in March 2016, the Foothill Extension of the Gold Line light rail corridor added six new stations and more than 11 miles of track to Los Angeles County’s growing Metro Rail system. The extension links the San Gabriel Valley foothill cities of Azusa, Irwindale, Duarte, Monrovia, and Arcadia with major employment centers in Pasadena and Downtown Los Angeles. With the completion of this long-awaited extension, and the Metro Expo Line extension to Santa Monica in May 2016, the Metro Rail network has expanded to now include 86 stations across nearly 100 miles of track.

See you in October!



SANTA ANITA PARK



PATRICIA DIFENDERFER AND ELISA PASTER | Program Co-Chairs

Program Sessions You Can't Miss

The 2016 APA California Conference is poised to provide a rich and varied professional development opportunity for planners statewide. With a program of more than 130 sessions, there are sure to be sessions and tracks for every interest.

Experts in many planning fields will present sessions on resiliency, sustainability and community outreach and engagement. Tracks addressing topics related to data, demographics and technology and the mechanics of crafting regulations are also well-represented among the sessions. Finally, City Beautiful 2.0, a theme honoring the conference's beautiful host City, will offer an opportunity for planners to highlight interdisciplinary city beautification and public infrastructure projects that are changing

people's relationship with place - projects ranging from monumental bridges to parklets, plazas and streetscape projects.

This year, a few sessions will also feature "quick hits," a curated group of approximately six-minute, Pecha Kucha-style sessions on a range of topics from how to plan a pop-up workshop to tools for planning affordable housing projects.

From Clovis, to Carlsbad to San Francisco - cities large and small, urban and suburban - will be represented and have a chance to showcase their planning projects and innovations, providing an opportunity for us to learn from each other in the great tradition of planning conferences.



Thinking About Submitting an Application for FAICP in the Upcoming Cycle?



If you are thinking about it, we can help you better prepare or help you decide whether this is the time to apply. Kurt Christiansen, new FAICP, California Chapter member and APA

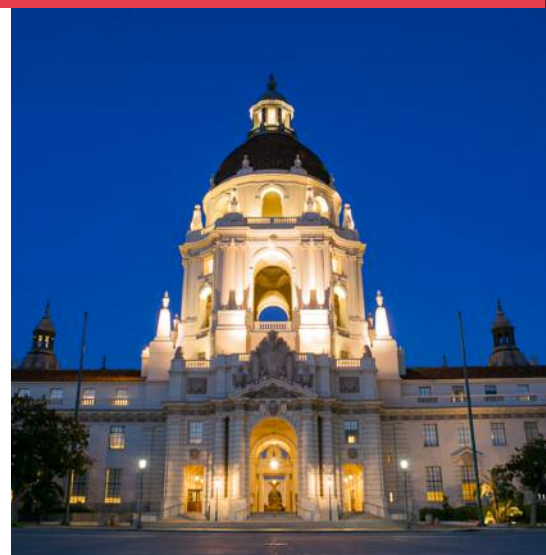
National Board Member will make time to talk to interested potential applications about "Demystifying the FAICP Process".

Look for details in the conference schedule and forthcoming program.

The APA California Conference in Pasadena Offers Learning Sessions Ranging from Current Themes to Professional Foundations

Sometimes you attend a conference to ground yourself in common theories and practices of the planning profession. Other years you decide to explore as many sessions on cutting edge topics as are available. Whatever your focus will be this year, be assured that you will be able to review the Conference Program document, website, or mobile app and find a wide array of Law CM session topics, exciting Ethics CM sessions - including APA's

'Ethics Case of the Year', Diversity-theme sessions, as well as sessions of interest to Young Planners, Commission & Board Members, and Students.



OPENING RECEPTION

JESSIE BARKLEY AND ESMERALDA GARCIA
Special Events Co-Chairs

Pasadena City Hall and Adjacent Centennial Square

Saturday, October 22
6:30 pm - 9:30 pm

Kick-off your Conference by attending Saturday night's Opening Reception at the Pasadena City Hall Courtyard! Constructed in 1927, Pasadena City Hall is an exquisite landmark that is one of the most distinctive public buildings in the United States and is listed on the National Register of Historic Places. Make sure to participate in what promises to be one of many highlights of this year's Conference.

Stroll through the Pasadena City Hall's lush courtyard and adjacent Centennial Square while enjoying food, beverages, and entertainment while mingling with your fellow planning colleagues. The event will be held outdoors, so please bring a jacket or sweater to stay warm. Full registration includes one ticket and additional tickets can be purchased for guests. You must bring your conference badge to gain admittance. Beer and wine is available for purchase at the event.

The Pasadena City Hall Courtyard is within a short walk from the Pasadena Convention Center and the Westin Pasadena and the Sheraton Pasadena hotels. Parking is extremely limited, and walking is highly encouraged. The site is also conveniently located just east of the Memorial Park station on Metro's Goldline.

KEYNOTE SPEAKER

Roger Egger, Founder and President L.A. Kitchen *The Power of Food. The Power of Community*

Robert Egger is the Founder and President of LA Kitchen, located a block from the Lincoln Heights station on the Metro Gold Line light rail line. His non-profit recovers fresh fruits and vegetables to fuel a culinary arts job training program for men and women coming out of foster care, and older men and women returning from incarceration. LA Kitchen's Founding Partner is the AARP Foundation, which gave their first million-dollar grant to help establish the model. Egger is also the CEO of Strong Food, LA Kitchen's social enterprise business, which employs graduates of the LA Kitchen training program, and competes for food service contracts to serve healthy meals to seniors in Los Angeles.

Robert pioneered the LA Kitchen model during his 24-year tenure as the President of the DC Central Kitchen, the country's first "community kitchen", where food donated by hospitality businesses and farms is used to fuel a nationally recognized culinary arts job training program. Since opening in 1989, the Kitchen (which is a \$11 million a year, self-sustaining, social enterprise) has produced over 30 million meals and helped 1,500 men and women gain full time employment. The Kitchen operates its own revenue generating business, Fresh Start Catering, as well as the Campus Kitchens Project, which coordinates similar



“Join us at the Opening Keynote lunch to hear Robert Egger share with us his vision of fresh solutions to solvable issues, by ensuring that neither food nor people ever go to waste.”

recycling/meal programs in over 45 colleges or high school based kitchens.

In addition, Robert founded or led numerous efforts (including The Nonprofit Congress and CForward) to rally employees of nonprofits to educate candidates about the economic role that nonprofits play in every community, and to support candidates who have detailed plans to strengthen the economy that includes nonprofits. Robert's book on the non-profit sector, *Begging for Change: The Dollars and Sense of Making Nonprofits Responsive, Efficient and Rewarding For All*, was released in 2004 by HarperCollins. It received the 2005 McAdam Book Award for "Best Nonprofit Management Book" by the Alliance for Non-profit Management.

Robert was included in the NonProfit Times list of the "50 Most Powerful and Influential" nonprofit leaders from 2006-2009. He was the recipient of the Restaurant Association of Metropolitan Washington's 2007

"Lifetime Achievement" award and the 2004 James Beard Foundation "Humanitarian of the Year" award. Robert has been named an Oprah Angel, a Washingtonian of the Year, a Point of Light, a Food Hero by Food Tank, a REAL Food Innovator by the US Healthful Food Council, and one of the Ten Most Caring People in America by the Caring Institute. He is also a 15 gallon blood donor to the American Red Cross.

Robert speaks throughout the country and internationally on the subjects of hunger, sustainability, nonprofit political engagement and social enterprise. He writes blogs and editorials to share his ideas about the non-profit sector and the future of America.

The *Wall Street Journal* says about Robert, "In his new wave effort to fight the welfare gap, synergy is a more important buzzword than handout, and his operation has more in common with a startup company than a traditional soup kitchen."

DIVERSITY SUMMIT

ANNA VIDAL AND VERONICA SIRANOSIAN
Conference Co-Chairs Diversity & Sustainability

Exploring Changing Faces, Places, and Planning at the 2016 California Conference

The 2016 APA California Conference in Pasadena will provide attendees the opportunity to delve into diversity in planning in multiple ways. The Diversity Summit this year will explore the history of diversity and planning in California, "*Changing Faces, Places, and Planning in California*". The summit will feature a panel discussion on how diverse populations have changed how we plan in California, what we've learned from the past, the implications of changing demographics for our profession, and our professional responsibilities to plan for diverse communities. The Diversity Summit will feature a renowned and dynamic group of panelists who will share their unique perspectives, including Brian Mooney, FAICP, Adjunct Lecturer at University of California, San Diego; George Davis, Executive Director of the California African American Museum in Los Angeles; Dr. Anastasia Loukaitou-Sideris, professor in the Department of Urban Planning and Associate Dean of the Luskin School of Public Affairs at UCLA; and Dr. Hilda Blanco, professor at USC's Sol Price School, Interim Director for Center for Sustainable Cities. In addition to the Diversity Summit, the conference has a multitude of diversity-related sessions on regional equity, urban design, economic development, and public outreach, providing attendees a variety of ways to explore diversity, engage with colleagues, and take practical lessons-learned back to their own communities.



KEYNOTE SPEAKER

Dr. Lucile Jones, Seismologist *Resilience by Design: Planning to Survive*

World-renowned seismologist Dr. Lucy Jones has led efforts in California and in Los Angeles to help leaders plan to avoid the impact of earthquake hazards. The combination of her scientific expertise and communication abilities recently led to a partnership with the City of Los Angeles to create solutions to four of the most significant seismic vulnerabilities in the City. She spent a year at City Hall, meeting with city stakeholders, technical experts and elected officials. The result was the most comprehensive plan ever undertaken to reduce seismic vulnerabilities. The five legislative proposals in the plan were all passed unanimously by the City Council in 2015.



Known globally as an expert in earthquakes and resilience, Dr. Jones has dedicated her life to helping communities and leaders prepare for the inevitable. She retired from federal service in March 2016 after serving as a seismologist with the US Geological Survey for 33 years. Most recently, she was the USGS Science Advisor for Risk Reduction, leading the USGS's longterm science planning for natural hazards research, and the SAFRR Project: Science Application for Risk Reduction that she

had created to apply USGS science to reduce risk in communities across the Nation. In this role, she led the creation of a national science strategy for all the natural hazards studied by the USGS to promote the science that would better prepare the nation for future natural hazards and the development of science products that would make the information more accessible to decision makers.

Dr. Jones's skill in communicating with reporters and connecting with the public has

made her known across California and the nation as the expert to talk to after major earthquakes. She has conducted thousands of interviews and appeared on most major news programs, including all national nightly news broadcasts, all the national morning shows, all the major cable news networks, as well as NPR, PBS, and numerous TV specials about earthquakes and disasters. The international media also depend on Dr. Jones who has done multiple interviews with BBC, CNN International, Der Spiegel and Swedish National Radio.

Dr. Jones continues as a Visiting Research Associate at the Seismological Laboratory of Caltech, a post she has held since 1984, and is developing programs to connect policy makers with scientists and support the use of science in community decision making. She is a fourth generation Southern Californian, and lives in Pasadena with her Icelandic born husband, Prof. Egill Hauksson, of Caltech.

The *LA Times* says about Lucy Jones: "In a city defined by celebrity, Jones has a unique kind of fame. She's been called the Beyoncé of earthquakes, the Meryl Streep of government service, a woman breaking barriers in a man's world. Authoritative yet nurturing, the "earthquake lady" has a knack for making a complicated point so simple it seems obvious. Along the way, she has dramatically changed the way the Southland prepares for earthquakes. Buildings are safer, first responders are better equipped and millions of residents have learned that the worst thing to do in an earthquake is to run outside."

"In her Closing Keynote Speech for the conference Dr. Jones will present information on her recent effort with the City of Los Angeles and the creation of their Resilience By Design initiative, which addressed building retrofits, water reliability, and communication systems. She will share her insight and process to help communities and leaders work towards a more resilient future."

BETSY McCULLOUGH, AICP | VP Conferences

Come to Pasadena this October and be Inspired!

The APA California Annual Conferences are always a great value! They provide a great opportunity to meet colleagues from around the state, have some planner-style fun, and build your professional knowledge and skills, in a uniquely -



California location. Our annual conference always attracts high-profile speakers from planning and associated professions, APA National representatives, and exhibitors eager to show the latest planning and tech inno-

ventions. This year's 4-day conference includes multiple meals and evening events with your registration. You can choose from over 25 mobile workshops and 130 conference sessions, and earn over 20 credits toward your AICP Certification Maintenance requirement. You'll leave the conference feeling inspired, connected and full of ideas that add value to your professional life!

You may have noticed a small increase in your conference registration fee this year. This was necessary because the cost of putting on a successful conference has been going up every year, including costs for the conference venue

(and associated AV services), food service and conference management. Nonetheless, our highest priority is to always ensure that the conference remains a great value for APA members and other attendees. Toward this end, the Chapter and the Conference Host Committee continues to actively pursue conference sponsorships and explore ways to reduce conference costs in order to keep registration cost in balance with the value of attending.

See you in Pasadena!

Become a Conference Sponsor!

Don't Miss this Once a Year Opportunity to Promote your Organization.

Help us make this conference a resounding success by making a commitment in the form of a sponsorship. Sponsorship opportunities include:

- Exhibit booth and event packages
- Mobile Phone app advertising
- Awards and keynote luncheon sponsors
- and many more

**SPONSOR AND EXIBITOR
REGISTRATION HAS
BEEN EXTENDED TO
AUGUST 31!**

Contact: Tricia Robbins Kasson at
Tricia.robbs.kasson@gmail.com



FRIDAY, OCTOBER 21

Conference-at-a-Glance

The Conference-at-a-Glance is subject to change. The most current information can be found on the website at www.apacalifornia-conference.org and on the mobile app prior to the conference, and in the registration area when the conference begins.

6:00 pm - 10:00 pm	ArtNight Pasadena - Enjoy a free evening of art, music and entertainment as Pasadena's most prominent arts and cultural institutions swing open their doors. <i>Free transportation is available between the venues.</i>	
TBD pm - TBD pm	APA California Board Dinner	TBD

SATURDAY, OCTOBER 22

8:30 am - 10:00 am	Student Registration	TBD
Pre-Conference Sessions 9:00 am - 4:00 pm	#1 Historic Preservation: New Frontiers for Local Planning <i>Additional \$90 fee applies, includes lunch.</i>	CM 6.5 PENDING 207
	#2 Leadership and Management Institute 2016 (CPR Session) <i>Additional \$90 fee applies, includes lunch.</i>	CM 6.5 PENDING 212
	#3 Geodesign Tools for Planners: Create Your Future Using Next Generation Technology Today <i>Additional \$90 fee applies, includes lunch.</i>	CM 6.5 PENDING 214
	#4 SB 743 Implementation: The Evolution from LOS to VMT <i>Additional \$90 fee applies, includes lunch.</i>	CM 6.5 PENDING 101
10:00 am - 4:00 pm	APA California Board Meeting	209/210
Student Session Block #1 10:00 am - 11:15 am	First Time Project Managers: Strategies for Success (CPF Session)	204
	Governing from Both Sides: Community-led Solutions Coexisting with Government Vision	208
	Brilliant Presentations: A Primer for Young Planners - Part 1	211
11:30 am - 1:00 pm	The Richard Weaver Scholarship Luncheon (Students only, ticketed invitation event)	Ballroom
12:00 pm - 6:00 pm	Conference Attendee Registration	Ballroom Foyer
1:00 pm - 4:00 pm	Orientation Tour - Arroyos and Foothills Tour: Pasadena, Northeast Los Angeles, and the San Gabriel Valley. <i>Additional \$50 fee applies.</i>	CM 3.0 PENDING Meet at 12:45 pm at the Plaza
Session Block #1 1:00 pm - 2:30 pm	Regional Equity in Concert: Challenges in Engaging Diverse Stakeholders Across the State	CM 1.5 PENDING Ballroom A
	Tools for Planning Affordable Housing Projects	CM 1.5 PENDING Ballroom B
	SANBAG: A Case Study for Successful Transit Planning in the 21st Century	CM 1.5 PENDING Ballroom C
	The Hots and Colds of Climate Action Plans	CM 1.5 PENDING 102
	Nolen, Robinson, and Burnham Look at Their Plans in 2016	CM 1.5 PENDING 103
	How Pasadena's City Beautiful Movement Led to "My City," the Quintessential Planning Process Every Planner Should Know	CM 1.5 PENDING 107
	Growing Green in Riverside: Integrating Climate Action with Entrepreneurial Opportunity	CM 1.5 PENDING 105
	Accelerating Sustainability Planning - APA California's Sustainability Champion Program	CM 1.5 PENDING 106
	CEQA and Noticing: Best Practices for Complying with CEQA, Brown Act, and Other Public Noticing Requirements	CM 1.5 LAW PENDING 107
	10 Crucial Things Planning School Didn't Teach You	204
Student Session Block #2 1:15 pm - 2:30 pm	Stepping Outside the Cubicle	208
	Brilliant Presentations: A Primer for Young Planners - Part 2	211

THANK YOU TO OUR 2016 SPONSORS & EXHIBITORS



CIVIC
SOLUTIONS



Michael Baker
INTERNATIONAL



SATURDAY, OCTOBER 22

Conference-at-a-Glance

The Conference-at-a-Glance is subject to change. The most current information can be found on the website at www.apacalifornia-conference.org and on the mobile app prior to the conference, and in the registration area when the conference begins.

Session Block #2 2:45 pm - 4:15 pm	You Put a Park Where? Creative Approaches to Urban Greening	CM 1.5 PENDING	Ballroom A
	Implementing "My City" in Your City: Balancing Bottom-Up Creativity and Top-Down Structure for Optimal Planning	CM 1.5 PENDING	107
	The Maker Economy: How to Adapt Your Code to Attract Makers	CM 1.5 PENDING	Ballroom C
	Barn Raising in the Burbs: Novel Strategies for Growing Food and Cultivating Community Through Urban Farming	CM 1.5 PENDING	102
	The Neighborhood Church Isn't What it Used to Be: Local Religious Institutions and Federal Law	CM 1.5 LAW PENDING	104
	Autonomous Vehicles and the Future of the City	CM 1.5 PENDING	105
	Walkable Watersheds: Promoting Equitable Investments in Infrastructure and Watershed Planning	CM 1.5 PENDING	106
	Empowered Planners: Tools for Achieving Better Project Energy Outcomes During the Entitlements Phase	CM 1.5 PENDING	107
	Crafting Mi Casa: Lessons of Latino Informal Housing Practices in Los Angeles	CM 1.5 PENDING	103
4:30 pm - 6:15 pm	Diversity Summit: The History of Diversity and Planning in California	CM 1.5 ETHICS PENDING	Ballroom
6:30 pm - 9:30 pm	Opening Reception - Pasadena City Hall Courtyard Enjoy food, beverages and entertainment, held outdoors	The short walk from the Convention Center is encouraged as parking is extremely limited.	

SUNDAY, OCTOBER 23

7:00 am - 9:00 am	Exhibit Set-Up	Hall C	
7:00 am - 9:00 am	Coffee & Tea	TBD	
7:00 am - 6:30 pm	Conference Attendee Registration	Ballroom Foyer	
7:45 am - 11:45 am	MOBILE WORKSHOP #1 - Explore Downtown Los Angeles: Complete Streets with Bikeshare. Additional \$60 fee applies, includes bike and snack.	CM 3.0 PENDING	Meet at 7:30 am at the Plaza
Session Block #3 8:00 am - 9:30 am	The 'Big 4' Sustainable Communities Strategies: Past, Present, and Future	CM 1.5 PENDING	101
	Livability + Accessibility = Better Transportation (Applying the Caltrans Smart Mobility Framework Equation)	CM 1.5 PENDING	102
	Purposeful Strategic Thinking: Gaining Community Support for Innovative Planning in a Challenging Environment (CPR Session) - Part 1	CM 1.5 PENDING	103
	Recreational and Medical Cannabis Regulations: Staying Above the Haze	CM 1.5 LAW PENDING	104
	Collaborative Planning in Northridge South: The Making of a Los Angeles Great Street in Suburban San Fernando Valley	CM 1.5 PENDING	105
	Transportation and Land Use Choices for Creating Walkable and Bikeable Communities	CM 1.5 PENDING	106
	GHGmageddon: Addressing Climate Change After the Newhall Decision	CM 1.5 PENDING	107
	Voices from the Past: Organizing and Engaging with Historic Preservation Groups	CM 1.5 PENDING	204
	Mapping, Metrics, and Outreach: Assessing Park Needs in America's Most Populous County	CM 1.5 PENDING	207
	Implementing a Renewable Energy Strategy in California	CM 1.5 PENDING	208

THANK YOU TO OUR 2016
SPONSORS & EXHIBITORS

IMPACT
SCIENCES

USC Lusk
Ross Minority
Program in Real Estate

Kimley»Horn

Expect More. Experience Better.



SUNDAY, OCTOBER 23

Conference-at-a-Glance

The Conference-at-a-Glance is subject to change. The most current information can be found on the website at www.apacalifornia-conference.org and on the mobile app prior to the conference, and in the registration area when the conference begins.

Session Block #3 8:00 am - 9:30 am	Latina Urbanism: The Role of Gender in Shaping Urban Design	CM 1.5 PENDING 211
	Streamlining Endangered Species Permitting: Regional Habitat Planning	CM 1.5 PENDING 212
	Urban Harvest: Toward a Resilient Food Infrastructure for Healthy Cities	CM 1.5 PENDING 210
8:00 am - 11:00 am	Orientation Tour - Arroyos and Foothills Tour: Pasadena, Northeast Los Angeles, and the San Gabriel Valley. <i>Additional \$50 fee applies.</i>	CM 3.0 PENDING Meet at 7:45 am at the Plaza
8:45 am - 1:15 pm	MOBILE WORKSHOP #2 - Connecting Communities and Public Transit Through the Connect US Action Plan. <i>Additional \$55 fee applies, includes food stops.</i>	CM 3.5 PENDING Meet at 8:30 am at the Plaza
9:00 am - 2:00 pm	MOBILE WORKSHOP #3 - A Walk on Avalon - The Commercial Heart of Wilmington. <i>Additional \$65 fee applies, includes lunch.</i>	CM 4.0 PENDING Meet at 8:45 am at the Plaza
	MOBILE WORKSHOP #4 - Bicycle Mobility in Historic Downtown Long Beach. <i>Additional \$85 fee applies, includes bike and lunch.</i>	CM 4.0 PENDING Meet at 8:45 am at the Plaza
9:00 am - 5:00 pm	Exhibits Open	Hall C
9:00 am - 5:00 pm	Tech Lounge Open	Hall C
Session Block #4 9:45 am - 11:15 am	Escaping a Circular Firing Squad: Implementing the Sustainable Groundwater Management Act	CM 1.5 PENDING 101
	482 Resilient Cities? DIY California Resilience	CM 1.5 PENDING 102
	Purposeful Strategic Thinking: Gaining Community Support for Innovative Planning in a Challenging Environment (CPR Session) - Part 2	CM 1.5 PENDING 103
	The Urban Resurgence of Inglewood: How Master Planning and Economic Development Goals Meet (PEN Session)	CM 1.5 PENDING 104
	Crafting a Self-Mitigating Plan	CM 1.5 LAW PENDING 105
	Missing Middle Housing: Is Your Planning and Coding Preparing Your City for the 21st Century Demand?	CM 1.5 PENDING 106
	So You Want to be in Charge? Trials, Tribulations and Lessons Learned from the Front Lines	CM 1.5 PENDING 107
	Paperless Preservation	CM 1.5 PENDING 204
	BID'ing for Success: Is a Business Improvement District the Answer?	CM 1.5 PENDING 208
	CEQA'S Midlife Crisis: The Planning - CEQA Relationship in Therapy	CM 1.5 PENDING 211
	California Initiatives: Democracy at Work or Working Against Democracy?	CM 1.5 LAW PENDING 207
	Being Ready for New Transportation Technology: City of Carlsbad Coastal Corridor	CM 1.5 PENDING 212
11:30 am - 1:30 pm	Opening Keynote Lunch - Robert Egger, Founder and President, L.A. Kitchen "The Power of Food. The Power of Community."	CM 1.5 PENDING Ballroom
	Property Rights, Takings, Exactions, and More: A Legal and Practical Update for Planners	CM 1.5 LAW PENDING 101
	Retooling Incentives	CM 1.5 PENDING 102
	Cal-Adapt 2.0: California's Climate Resilience Toolkit for Planners	CM 1.5 PENDING 103

THANK YOU TO OUR 2016 SPONSORS & EXHIBITORS



SUNDAY, OCTOBER 23

Conference-at-a-Glance

The Conference-at-a-Glance is subject to change. The most current information can be found on the website at www.apacalifornia-conference.org and on the mobile app prior to the conference, and in the registration area when the conference begins.

Session Block #5 1:30 pm - 3:00 pm	Creating Pasadena City Beautiful 2.0 Through Historic Preservation, Urban Design and Community Engagement	CM 1.5 PENDING	104
	Connecting the Dots: Strategies and Tips for Making a Finding	CM 1.5 LAW PENDING	105
	What Went Right?! Setting Up Your General Plan Advisory Committee for Success	CM 1.5 PENDING	106
	Want to Take Public Transit to LAX?	CM 1.5 PENDING	107
	Beyond Roberts Rules? Procedures for the Planning Commission (Commission and Board Session)	CM 1.5 PENDING	207
	Moving Beyond a Project's Effects on the Environment: Addressing Environmental Impacts on Projects Outside of CEQA	CM 1.5 LAW PENDING	204
	Sea Level Rise and Living with Water in the City of the Future	CM 1.5 PENDING	208
	Parking Management for a Sharing Economy - Part 1	CM 1.5 PENDING	211
	Innovative, Collaborative, and Sustainable: The City of Hayward General Plan Update	CM 1.5 PENDING	212
1:30 pm - 5:30 pm	Staying Up To Speed With High-Speed Rail: Lessons Learned from Current High-Speed Rail Corridor Planning Efforts	CM 1.5 PENDING	209/210
	MOBILE WORKSHOP #5 - Documenting Small Footprint Higher Density Housing Types (Missing Middle Housing) in Pasadena. Additional \$40 fee applies. Meet at 12:45 pm at the Plaza. Some walking involved.	CM 4.0 PENDING	
	MOBILE WORKSHOP #6 - Pasadena Historic District Tour. Additional \$40 fee applies. Some walking involved. Meet at 1:30 pm at the Plaza.	CM 3.0 PENDING	
1:45 pm - 5:15 pm	MOBILE WORKSHOP #7 - Brewing the Craft Economy in Los Angeles' Arts District. Additional \$70 fee applies, includes beer, spirit tastes and snacks. Some walking involved. Meet at 1:45 pm at the Plaza.	CM 3.0 PENDING	
2:00 pm - 6:00 pm			
3:00 pm - 3:30 pm	Break		Hall C
3:00 pm - 4:45 pm	Planners Emeritus Network Meeting		205
3:00 pm - 5:00 pm	California Planning Foundation (CPF) Virginia Viado and Ted Holzem Silent Auction Open	CM 1.5 PENDING	Hall C
Session Block #6 3:30 pm - 5:00 pm	Visualizing Sustainability Planning in Southern California	CM 1.5 PENDING	101
	Ethics Case of the Year	CM 1.5 ETHICS PENDING	102
	Stimulating Urban Density and Managing Traffic Congestion Scenarios Post-CEQA Standards for Vehicle Miles Traveled	CM 1.5 PENDING	103
	Moving Towards City Beautiful by Planning for Transportation, Community, and Place	CM 1.5 PENDING	104
	Regional Planning Through Local Community Outreach	CM 1.5 PENDING	105
	What's the Recipe for SB 743 Implementation?	CM 1.5 LAW PENDING	106
	Beyond the Freeway	CM 1.5 PENDING	107
	Freeway Removals and Urban Responses: Actions Taken, Lessons Learned, Visions Planned	CM 1.5 PENDING	204
	A Trail of Four Cities: Lessons in Effective Interagency Collaboration	CM 1.5 PENDING	207
	Alphabet Soup: Deciphering Sustainability Rating Systems and Lessons Learned at the Neighborhood Scale	CM 1.5 PENDING	

THANK YOU TO OUR 2016 SPONSORS & EXHIBITORS



bae urban economics



**Veronica Tam
and Associates**



SUNDAY, OCTOBER 23

Conference-at-a-Glance

The Conference-at-a-Glance is subject to change. The most current information can be found on the website at www.apacalifornia-conference.org and on the mobile app prior to the conference, and in the registration area when the conference begins.

Session Block #6 3:30 pm - 5:00 pm	Parking Management for a Sharing Economy - Part 2	CM 1.5 PENDING 211	
	Sustainability Through Traditional Native American Land Stewardship	CM 1.5 PENDING 209/210	
	Approaches to Hybrid Industrial Land Uses Throughout Los Angeles	CM 1.5 PENDING 212	
5:15 pm - 7:00 pm	California Planning Foundation (CPF) Virginia Viado and Ted Holzem Reception and Live Auction		Hall C
7:30 pm - 9:30 pm	Young Planner and Student Mixer	White Horse Lounge, 41 S. De Lacey Ave., Pasadena	

MONDAY, OCTOBER 24

7:00 am - 9:00 am	Coffee & Tea and Breakfast-on-the-Go	Hall C
7:00 am - 6:30 pm	Conference Attendee Registration	Ballroom Foyer
8:00 am - 6:30 pm	Exhibits Open	Hall C
9:00 am - 6:30 pm	Tech Lounge Open	Hall C
8:00 am - 1:00 pm	MOBILE WORKSHOP #8 - The Creative Legacy of the Sunset Strip Additional \$70 fee applies, includes lunch.	CM 4.0 PENDING Meet at 7:45 am at the Plaza
Session Block #7 8:00 am - 9:30 am	Passing the AICP Exam: Who Wants to be a Certified Planner?	101
	Your New Form-Based Code Didn't Come with an Owner's Guide?	CM 1.5 PENDING 102
	Creating Resilient Places: State Resources and Incentives Available to Local Government for Responding to Climate Change	CM 1.5 LAW PENDING 103
	TOD 2.0: Maximizing Community Benefits Through Joint Development	CM 1.5 PENDING 104
	Housing the Needy: Defining the Need and the Needy	CM 1.5 PENDING 105
	Restoring the Public Confidence of Planners Through Effective Leadership (CPR Session)	CM 1.5 PENDING 106
	Tailoring Ridesource Innovations to Connect the First and Last Mile in Your City	CM 1.5 PENDING 107
	The Ground Up: Placemaking Strategies for a Resilient Los Angeles River	CM 1.5 PENDING 204
	Legally Defensible: Sharpening a Planning Commission's Findings and Conditions of Approval (Commission and Board Session)	CM 1.5 LAW PENDING 207
	Moving California Forward: Hard Numbers and Policy Recommendations	CM 1.5 PENDING 208
	Bridging Los Angeles: City Beautiful Now & Then	CM 1.5 PENDING 211
	Game Time! The Opportunities and Challenges in Planning for Major Sports and Entertainment Facilities	CM 1.5 PENDING 212
	Ride the First Wave of Sustainable Innovation Districts!	CM 1.5 PENDING 209/210
	Measure What You Treasure - How Data Shines a Light on Priorities	CM 1.5 PENDING Ballroom 2
8:15 am - 1:15 pm	MOBILE WORKSHOP #9 - Light Rail to the Beach: Station Area Planning on the Expo Line. Additional \$70 fee applies, includes lunch.	CM 4.0 PENDING Meet at 8:00 am at the Plaza
	MOBILE WORKSHOP #10 - Exploring Culver City's Transit Oriented Developments and the Historic Helms Bakery District. Additional \$70 fee applies, includes lunch. Meet at 8:00 am at the Plaza	CM 4.0 PENDING

Looking for In-Depth Practical or Policy Learning Opportunities? Attend a Pre-Conference Session on Saturday, October 22

Come to the APA California Chapter Annual Conference in Pasadena and find practical or policy, expert-led, in-depth and low-cost learning about critical topics of the day while gaining 6.5 hours of CM credit.

The "Pre-Conference Sessions" program continues for the 4th consecutive year with some new offerings and some invaluable updated sessions on past topics. We have offered topics exploring Real Estate Finance & Development Pro-Formas, Urban Design for Planners by Planners, Resilience Planning for Future Land Use, and the Leadership & Management Institute.

This year the topics are just as varied. The Historic Preservation seminar will be conducted by public, private and non-profit sector experts from the Pasadena and Los Angeles area presenting tools and techniques in design, districts, and designations for historical structures. The Geodesign seminar will teach you how to use software to create new inter-active tools and visualization methods that enable real-time assessment of conditions and 'on the fly' assessments of alternative designs and plans. The SB743 session will focus on how jurisdictions, consultants, and private developers can implement the requirements of SB743. Finally, the Leadership and Management Institute 2016 is a well-known comprehensive and interactive experience that includes dialog and practice in a variety of strategies intended to strengthen you as a leader and manager in your



MONDAY, OCTOBER 24

Conference-at-a-Glance

The Conference-at-a-Glance is subject to change. The most current information can be found on the website at www.apacalifornia-conference.org and on the mobile app prior to the conference, and in the registration area when the conference begins.

8:15 am - 1:15 pm	MOBILE WORKSHOP #11 - Boyle Heights Joint Development: A Collaborative TOD Process. Additional \$55 fee applies, includes lunch. CM 4.0 PENDING Meet at 8:00 am at the Plaza
8:30 am - 11:30 am	MOBILE WORKSHOP #12 - 94 Years of Planning: Pasadena's Iconic Civic Center Additional \$30 fee applies. CM 3.0 PENDING Meet at 8:15 am at the Plaza
9:30 am - 3:30 pm	MOBILE WORKSHOP #13 - The Crenshaw Corridor: Leveraging Public Investments to Implement Local Visions for Transit-Oriented Communities. Additional \$80 fee applies. CM 4.5 PENDING Meet at 9:15 am at the Plaza
9:45 am - 11:15 am	Planning Commissioner and Board Roundtable (Open only to invited Commission and Board Members) 205
Session Block #8 9:45 am - 11:15 am	High Speed Rail Station Plans: Not Your Mother's TOD CM 1.5 PENDING 101
	One Line, Two Cities: Approaches to Planning Around Expo Phase 2 CM 1.5 PENDING 102
	Effective Community Outreach for Diverse Communities: Tools, Resources & Best Practices from the Field CM 1.5 PENDING 103
	The Future of the Los Angeles River: Impacts of Alternative 20 CM 1.5 PENDING 104
	The City of Gardens Revisited CM 1.5 PENDING 105
	APA California 2016 Legislative Update CM 1.5 LAW PENDING 106
	2016 Annual CEQA Update: Laws, Courts, and Guidelines CM 1.5 LAW PENDING 107
	Net Zero Trips: Fact or Fiction? CM 1.5 PENDING 207
	The Future of Mobility: What Does it Mean for Our Communities? CM 1.5 PENDING 208
	Quick Hits: Demographics, Housing, CEQA and More CM 1.5 PENDING 209/210
	Are Small and Medium Multi-family Housing Properties the Key to Housing Affordability? CM 1.5 PENDING 211
	Planning Sustainable Communities, Moving Towards Implementation CM 1.5 PENDING 212
	When NOx and the Neighborhood Must Coexist CM 1.5 PENDING 204
9:45 am - 3:15 pm	MOBILE WORKSHOP #14 - Master Planning the NBCUniversal ThemePark and Campus. Additional \$85 fee applies, includes lunch. CM 4.5 PENDING Meet at 9:30 am at the Plaza
11:30 am - 1:30 pm	Lunch on Your Own Throughout Pasadena
11:30 am - 1:30 pm	California Planning Roundtable Meeting 205
12:00 noon - 5:00 pm	MOBILE WORKSHOP #15 - Los Angeles River Revitalization Bicycle Tour Additional \$85 fee applies, includes bike, lunch. CM 4.0 PENDING Meet at 11:45 am at the Plaza
12:15 pm - 5:15 pm	MOBILE WORKSHOP #16 - Re-envisioning a Transfer Station as Gateway to a Transit-Oriented Community. Additional \$55 fee applies, includes lunch. CM 4.0 PENDING Meet at 12:00 pm at the Plaza
12:30 pm - 5:00 pm	MOBILE WORKSHOP #17 - Balancing Preservation and Change in Pasadena and Los Angeles. Additional \$60 fee applies. Some walking involved. CM 4.0 PENDING Meet at 12:15 pm at the Plaza
1:00 pm - 4:30 pm	MOBILE WORKSHOP #18 - Downtown Glendale: Planning Animated Additional \$40 fee applies. Some walking involved. CM 2.5 PENDING Meet at 12:45 pm at the Plaza
1:30 pm - 4:00 pm	MOBILE WORKSHOP #19 - Old Pasadena: Turning Small Change into Big Dollars- Redirecting Local Parking Revenue. Additional \$30 fee applies. Some walking involved. CM 2.0 PENDING Meet at 1:15 pm at the Plaza

THANK YOU TO OUR 2016 SPONSORS & EXHIBITORS



PLACEWORKS

Formerly The Planning Center | DC&E



Rincon Consultants, Inc.

Environmental Scientists Planners Engineers

www.rinconconsultants.com



MONDAY, OCTOBER 24

Conference-at-a-Glance

The Conference-at-a-Glance is subject to change. The most current information can be found on the website at www.apacalifornia-conference.org and on the mobile app prior to the conference, and in the registration area when the conference begins.

1:30 pm - 5:00 pm	MOBILE WORKSHOP #20 - Reinventing City Life: Seeds of Change at Los Angeles Eco-Village. Additional \$40 fee applies. CM 2.5 PENDING Meet at 1:15 pm at the Plaza																										
Session Block #9 1:45 pm - 3:00 pm	<table> <tr> <td>Planning in Disadvantaged Communities Through Public Interest Design</td><td>CM 1.5 PENDING 101</td></tr> <tr> <td>Neighborhoods in Transition - A Closer Look at Gentrification and the Environmental Review Process</td><td>CM 1.5 LAW PENDING 102</td></tr> <tr> <td>It Takes a Transit-Oriented Village: Partnerships and Patience</td><td>CM 1.5 PENDING 103</td></tr> <tr> <td>What Are Healthy Cities and How Can We Plan for Them?</td><td>CM 1.5 PENDING 104</td></tr> <tr> <td>Sign Language: Crafting Effective, Understandable and Legally Defensible Regulations</td><td>CM 1.5 LAW PENDING 105</td></tr> <tr> <td>The Balancing Act: Genuine Public Engagement Across The Digital Divide</td><td>CM 1.5 PENDING 106</td></tr> <tr> <td>City Incorporations in California: Case Studies and Prospects for New Cities</td><td>CM 1.5 PENDING 107</td></tr> <tr> <td>Think Outside the Parking Lot: High Speed Rail's Sustainable Access Plan</td><td>CM 1.5 PENDING 204</td></tr> <tr> <td>Evolution of the Online Zoning Code: WebCode</td><td>CM 1.5 PENDING 207</td></tr> <tr> <td>LA Waterfront: The City's Next Great Place?</td><td>CM 1.5 PENDING 208</td></tr> <tr> <td>Major Employer Approaches to Bike Networks: Google & Stanford Quantify the Impacts of Regional Bike Networks in New Ways</td><td>CM 1.5 PENDING 211</td></tr> <tr> <td>Wayfinding: The Value of Knowing How to Get There</td><td>CM 1.5 PENDING 212</td></tr> <tr> <td>The Nuts, Bolts and Windows of Sustainable Historic Buildings</td><td>CM 1.5 PENDING 209/210</td></tr> </table>	Planning in Disadvantaged Communities Through Public Interest Design	CM 1.5 PENDING 101	Neighborhoods in Transition - A Closer Look at Gentrification and the Environmental Review Process	CM 1.5 LAW PENDING 102	It Takes a Transit-Oriented Village: Partnerships and Patience	CM 1.5 PENDING 103	What Are Healthy Cities and How Can We Plan for Them?	CM 1.5 PENDING 104	Sign Language: Crafting Effective, Understandable and Legally Defensible Regulations	CM 1.5 LAW PENDING 105	The Balancing Act: Genuine Public Engagement Across The Digital Divide	CM 1.5 PENDING 106	City Incorporations in California: Case Studies and Prospects for New Cities	CM 1.5 PENDING 107	Think Outside the Parking Lot: High Speed Rail's Sustainable Access Plan	CM 1.5 PENDING 204	Evolution of the Online Zoning Code: WebCode	CM 1.5 PENDING 207	LA Waterfront: The City's Next Great Place?	CM 1.5 PENDING 208	Major Employer Approaches to Bike Networks: Google & Stanford Quantify the Impacts of Regional Bike Networks in New Ways	CM 1.5 PENDING 211	Wayfinding: The Value of Knowing How to Get There	CM 1.5 PENDING 212	The Nuts, Bolts and Windows of Sustainable Historic Buildings	CM 1.5 PENDING 209/210
Planning in Disadvantaged Communities Through Public Interest Design	CM 1.5 PENDING 101																										
Neighborhoods in Transition - A Closer Look at Gentrification and the Environmental Review Process	CM 1.5 LAW PENDING 102																										
It Takes a Transit-Oriented Village: Partnerships and Patience	CM 1.5 PENDING 103																										
What Are Healthy Cities and How Can We Plan for Them?	CM 1.5 PENDING 104																										
Sign Language: Crafting Effective, Understandable and Legally Defensible Regulations	CM 1.5 LAW PENDING 105																										
The Balancing Act: Genuine Public Engagement Across The Digital Divide	CM 1.5 PENDING 106																										
City Incorporations in California: Case Studies and Prospects for New Cities	CM 1.5 PENDING 107																										
Think Outside the Parking Lot: High Speed Rail's Sustainable Access Plan	CM 1.5 PENDING 204																										
Evolution of the Online Zoning Code: WebCode	CM 1.5 PENDING 207																										
LA Waterfront: The City's Next Great Place?	CM 1.5 PENDING 208																										
Major Employer Approaches to Bike Networks: Google & Stanford Quantify the Impacts of Regional Bike Networks in New Ways	CM 1.5 PENDING 211																										
Wayfinding: The Value of Knowing How to Get There	CM 1.5 PENDING 212																										
The Nuts, Bolts and Windows of Sustainable Historic Buildings	CM 1.5 PENDING 209/210																										
Session Block #10 3:15 pm - 4:45 pm	<table> <tr> <td>Blazing the Trail: Pasadena's Path to Adopting Vehicle Miles Traveled Transportation Metrics</td><td>CM 1.5 PENDING 101</td></tr> <tr> <td>Swimming with Sharks</td><td>CM 1.5 PENDING 102</td></tr> <tr> <td>Crenshaw on the Move: Reimagining Community Spaces</td><td>CM 1.5 PENDING 103</td></tr> <tr> <td>The Small in Big Cities: A New City Beautiful Movement</td><td>CM 1.5 PENDING 104</td></tr> <tr> <td>Proven Framework & Techniques for Meaningful Public Engagement</td><td>CM 1.5 PENDING 105</td></tr> <tr> <td>The Affordable Housing Quandary: We Need It, But How, and Where?</td><td>CM 1.5 LAW PENDING 106</td></tr> <tr> <td>Moving from TODs to TOCs: Creating Transit Oriented Communities, Addressing Equity & Increasing Ridership</td><td>CM 1.5 PENDING 107</td></tr> <tr> <td>Generating Vibrant Downtowns People Love: Plan Downtown Oakland</td><td>CM 1.5 PENDING 204</td></tr> <tr> <td>Preventing Violence by Design: The Role of Planning and Transportation in Community Safety</td><td>CM 1.5 PENDING 207</td></tr> <tr> <td>Injecting Sustainable Best Practices Into Equitable Development</td><td>CM 1.5 PENDING 208</td></tr> <tr> <td>Developing Local Density Bonuses: Lessons from the State, Neighbor Cities, and the Heart of San Francisco</td><td>CM 1.5 PENDING 211</td></tr> <tr> <td>Quick Hits: Technology, Community Outreach and More</td><td>CM 1.5 PENDING 209/210</td></tr> </table>	Blazing the Trail: Pasadena's Path to Adopting Vehicle Miles Traveled Transportation Metrics	CM 1.5 PENDING 101	Swimming with Sharks	CM 1.5 PENDING 102	Crenshaw on the Move: Reimagining Community Spaces	CM 1.5 PENDING 103	The Small in Big Cities: A New City Beautiful Movement	CM 1.5 PENDING 104	Proven Framework & Techniques for Meaningful Public Engagement	CM 1.5 PENDING 105	The Affordable Housing Quandary: We Need It, But How, and Where?	CM 1.5 LAW PENDING 106	Moving from TODs to TOCs: Creating Transit Oriented Communities, Addressing Equity & Increasing Ridership	CM 1.5 PENDING 107	Generating Vibrant Downtowns People Love: Plan Downtown Oakland	CM 1.5 PENDING 204	Preventing Violence by Design: The Role of Planning and Transportation in Community Safety	CM 1.5 PENDING 207	Injecting Sustainable Best Practices Into Equitable Development	CM 1.5 PENDING 208	Developing Local Density Bonuses: Lessons from the State, Neighbor Cities, and the Heart of San Francisco	CM 1.5 PENDING 211	Quick Hits: Technology, Community Outreach and More	CM 1.5 PENDING 209/210		
Blazing the Trail: Pasadena's Path to Adopting Vehicle Miles Traveled Transportation Metrics	CM 1.5 PENDING 101																										
Swimming with Sharks	CM 1.5 PENDING 102																										
Crenshaw on the Move: Reimagining Community Spaces	CM 1.5 PENDING 103																										
The Small in Big Cities: A New City Beautiful Movement	CM 1.5 PENDING 104																										
Proven Framework & Techniques for Meaningful Public Engagement	CM 1.5 PENDING 105																										
The Affordable Housing Quandary: We Need It, But How, and Where?	CM 1.5 LAW PENDING 106																										
Moving from TODs to TOCs: Creating Transit Oriented Communities, Addressing Equity & Increasing Ridership	CM 1.5 PENDING 107																										
Generating Vibrant Downtowns People Love: Plan Downtown Oakland	CM 1.5 PENDING 204																										
Preventing Violence by Design: The Role of Planning and Transportation in Community Safety	CM 1.5 PENDING 207																										
Injecting Sustainable Best Practices Into Equitable Development	CM 1.5 PENDING 208																										
Developing Local Density Bonuses: Lessons from the State, Neighbor Cities, and the Heart of San Francisco	CM 1.5 PENDING 211																										
Quick Hits: Technology, Community Outreach and More	CM 1.5 PENDING 209/210																										

THANK YOU TO OUR 2016 SPONSORS & EXHIBITORS



MONDAY, OCTOBER 24

Conference-at-a-Glance

The Conference-at-a-Glance is subject to change. The most current information can be found on the website at www.apacalifornia-conference.org and on the mobile app prior to the conference, and in the registration area when the conference begins.

Session Block #10	Post-Redevelopment Financing of Urban Infill and Revitalization (CPR Session)	CM 1.5 PENDING 212
5:00 pm - 6:00 pm	APA California Chapter Awards Ceremony	Ballroom
6:00 pm - 8:00 pm	Consultant's Reception	Hall C
7:30 pm - 10:00 pm	Planners for Diversity Mixer	TBD
8:00 pm - 10:00 pm	Exhibit Tear-Down	Hall C

TUESDAY, OCTOBER 25

7:00 am - 12:00 pm	Conference Registration	Ballroom Foyer
7:45 am - 11:45 am	MOBILE WORKSHOP #21 - South Park: Turning Parking Lots Into Paradise Additional \$45 fee applies, includes coffee and snack. Some walking involved. Meet at 7:30 am at the Plaza	CM 3.0 PENDING
	MOBILE WORKSHOP #22 - The Art, Architecture and History of the Arroyo Seco Additional \$55 fee applies, includes snack. Meet at 7:30 am at the Plaza	CM 3.0 PENDING
Session Block #11 8:00 am - 9:30 am	Creating Engaging and Sustainable Alleys in an Urban Environment	CM 1.5 PENDING 101
	Express Route or Train Wreck: Strategies to Keep your Projects from Derailing	CM 1.5 PENDING 102
	Form-Based Code Misconceptions: Making FBCs Meaningful and Effective	CM 1.5 PENDING 103
	Innovating for Housing Affordability	CM 1.5 PENDING 104
	Historic Preservation Planning in Three Orange County Cities	CM 1.5 PENDING 105
	Out of CEQA - Into Planning: Filling the Policy Gaps Left by CEQA's Evolution	CM 1.5 PENDING 106
	Density Bonus Dos, Do Nots, and Don't Knows	CM 1.5 LAW PENDING 107
	Cities: Driving the Transition to a Sustainable Future	CM 1.5 PENDING 204
	Including Vulnerable Citizens in a General Plan Update: A Case Study in Social Equity	CM 1.5 PENDING 208
	Don't Snooze on Your Booze: How to Make Your Alcohol Entitlement Process Work for You	CM 1.5 PENDING 211
	Creating Sustainable Communities: Zoning for Water Neutral Development	CM 1.5 PENDING 207
	A Planner's Role in Strengthening the Creative Economy	CM 1.5 PENDING 212
	Driving the Future: Regional Planning for Alternative Fuels	CM 1.5 PENDING 209/210
8:00 am - 11:00 am	MOBILE WORKSHOP #23 - The Nuts and Bolts of the Foothill Gold Line Extension Additional \$35 fee applies. Meet at 7:45 am at the Plaza	CM 3.0 PENDING
8:00 am - 11:45 am	MOBILE WORKSHOP #24 - Burbank Production Studios Tour Additional \$65 fee applies. Meet at 7:45 am at the Plaza	CM 3.0 PENDING
8:00 am - 12:00 noon	MOBILE WORKSHOP #25 - Los Angeles' Olympic Legacy Additional \$45 fee applies. Meet at 7:45 am at the Plaza	CM 3.0 PENDING
8:30 am - 11:30 am	MOBILE WORKSHOP #26 - Rose Bowl: Managing Events to Reduce Community Impacts. Additional \$45 fee applies. Meet at 8:15 am at the Plaza	CM 2.5 PENDING
9:45 am - 11:15 am	Closing Plenary Brunch - Dr. Lucile Jones, Seismologist "Resilience By Design: Planning to Survive"	CM 1.5 PENDING Ballroom

THANK YOU TO OUR 2016 SPONSORS & EXHIBITORS

For questions about sponsorship contracts, please contact:

Tricia Robbins Kasson
tricia.robbs.kasson@gmail.com
323.552.3231



2016
APA California Conference
Pasadena

TUESDAY, OCTOBER 25

Conference-at-a-Glance

The Conference-at-a-Glance is subject to change. The most current information can be found on the website at www.apacalifornia-conference.org and on the mobile app prior to the conference, and in the registration area when the conference begins.

11:30 am - 1:00 pm	Survivor: Ethics Island!	CM 1.5 ETHICS PENDING Ballroom
1:00 pm - 2:00 pm	California County Planning Directors	205
1:00 pm - 6:00 pm	MOBILE WORKSHOP #27 - San Gabriel Valley Chinese Food and Culture Tour <small>Additional \$75 fee applies, includes multiple tastes.</small>	CM 3.0 PENDING <small>Meet at 12:45 pm at the Plaza</small>

Check our website for more details www.APACalifornia-Conference.org

PLANNING COMMISSIONER'S CORNER

SCOTT LEFAVER, AICP | Commission and Board Representative

Special Planning Commission and Board Sessions at the APA California Chapter Conference

The APA California Conference in Pasadena will include several sessions that focus on Planning Commission and Board activities and interests. On Monday morning, October 24, Commissioners and Board members will gather for the **Planning Commissioner and Board Round Table**. This will be an opportunity for planning commissioners and public board members from throughout the state to meet their fellow commissioners board members and share their thoughts and experiences in an informal setting. There will be no set agenda other than a brief presentation from members of Pasadena's Planning Commission, our host city for the conference. As moderator I will lead an open discussion during the session. Leading questions will be: what are some major planning issues in your community and how are they being addressed; what questions and advice would you like to ask of your fellow planning commissioners about planning issues in your community; what more would you like to see in APA conferences that focus on planning commission issues? Similar sessions were well received at the APA National



Conference and the APA California Conference in Oakland.

Other specially designated Commission and Board sessions include:

Legally Defensible: Sharpening a Planning Commission's Findings and Conditions of Approval

Rob Eastwood, AICP, Planning Manager for the County of Santa Clara, has put together a panel that will look at how to make proper findings and apply appropriate conditions of approval for projects being heard by your Planning Commission. Such findings are key to a clear, legally defensible decision when planning commissions approve or use findings to deny a project. Included in the panel will be Chris Cheleden, J.D., Deputy County Counsel, County of Santa Clara, Debbie Cauble J.D. a Planning Commissioner with the County of Santa Clara, who has practiced law with an emphasis on land use for over 30 years and Gustav Larsson, a Councilmember and former Planning Commissioner for the City of Sunnyvale.

Beyond Roberts Rules - Procedures for the Planning Commission

Stephen Haase, AICP, currently Chair of the City of San Diego Planning Commission

and former Planning Director of the City of San Jose, will review the merits of going beyond Robert's Rules of Order to provide a respectful, inclusive public process to support great planning and a thoughtful decision making process. Joining him will be Marcus Bush, National City Planning Commissioner, Ma'Ayn Johnson, AICP, Planning Commissioner for the City of Fullerton and Andrew Sturfels, Planning Commissioner for the City of West Sacramento.

Of Further Interest:

Two other sessions may also be of interest to Planning Commissioners. Manira Sandhir, AICP, will chair a panel reviewing use permit applications for religious institutions and issues those applications bring with them: **The Neighborhood Church Isn't What It Used to Be: Local Religious Institutions and Federal Law**. Rob Eastwood, AICP will be chairing another panel looking at the successful implementation of regional habitat plans, in **Streamlining Endangered Species Permitting - Regional Habitat Planning**.

See You at the Conference!

Scott Lefaver, AICP is Chair of the County of Santa Clara Planning Commission.

JOHN TERELL, AICP | VP Policy & Legislation
 SANDE GEORGE | Lobbyist
 LAUREN DEVALENCIA Y SANCHEZ | Lobbyist

APA California Legislative Update

Many Planning Related Bills Continue to Move

The deadline for bills to pass their first policy committee on May 13th came and went, with over a hundred planning-related bills still continuing to move. APA California has been busy working on bills dealing with affordable housing, the density bonus law, and environmental justice, just to name just a few.

APA California also is continuing to advocate for its sponsored by right housing legislation with the goal to make it easier to get housing built. The by right housing approval issue was elevated recently when the Governor submitted his own budget trailer bill language proposing a much broader by right process. APA is working with the Governor's staff, HCD and budget committee staff to develop a much more focused proposal closer to APA's concept in AB 2522, authored by Assembly Member Bloom. More information on AB 2522 is below.

The Governor's May Revise

The Governor released the May Revise on May 13th. Below is a list of relevant sections of the summary of interest to planners. The full summary can be found at: <http://www.ebudget.ca.gov/FullBudgetSummary.pdf>

Of interest to APA Members:

- Page 10 – Reducing the Cost of Housing
- Page 11 - Strengthening Infrastructure – Summary
- Page 12 - Addressing Climate Change - Summary
- Page 45 - Housing and Local Government
- Page 53 - Redevelopment Agencies
- Page 61- Transportation, including Governor's transportation funding package
- Page 65 - Drought Resiliency
- Page 75 - Enhancing Environmental Justice

As mentioned above, also included in the May Revise is a proposal on by right development. APA California appreciates the



Governor and HCD elevating the discussion of by right and the need to find ways to get affordable housing built, however APA California's proposal is narrower in scope and uses by right processes already authorized in existing statutes. APA California will continue to work with the administration to get a by right bill passed this year.

Key Planning Bills

Below is a list of key planning bills that APA California actively lobbied so far this session. To view the full list of hot planning bills, copies of the measures, up-to-the minute status and APA California letters and positions, please continue to visit the legislative page on APA California's website at www.apacalifornia.org.

AB 1934 (Santiago) – Density Bonus for Commercial Development

This bill would require a city or county to grant to a commercial developer a density bonus when an applicant for commercial development agrees to partner with an affordable housing developer to construct a mixed-used project with the housing located on the same site. The author's goal is to find creative new ways to get more affordable housing built. While the bill continues to move, it does so with the caveat that the author will continue to work with stakeholders to come to a consensus. APA California participated in a meeting to discuss stakeholder concerns, including APA's opposition to the lack of a definition of "partner" and the concessions that cities and counties would be forced to grant the commercial developer, including a 20% variance on floor area ratio and other

local requirements. APA California will be reviewing amendments based on the discussion in the meeting, but cannot support the bill as currently amended.

Position: Oppose Unless Amended
Status: Assembly Floor

AB 2002 (Stone) – FPPC Requirements for Communication with the Coastal Commission

This bill would have required anyone lobbying the Coastal Commission to register with the FPPC as a lobbyist, unless the person is a local government agency employee or lobbies for not more than one action per year. APA California took an Oppose unless Amended position because the bill did not exempt planning consultants and design professionals hired by local agencies to act on the agencies' behalf with Commission staff. After meeting with author's office on this issue, the author agreed to amend the bill to clarify that planning consultants and design professionals representing local agencies would not be required to register before having discussions with Commission staff.

Position: Neutral as Amended
Location: Assembly Appropriations
Suspense File

AB 2208 (Santiago) – Inventory of Sites to Include Housing Sites Above Local Government Buildings and Underutilized Sites

This bill would expand the Housing Element inventory of land suitable for residential development to include buildings

➤ P23 APA California Legislative Update

owned or under the control of a city or a county, zoned for residential or nonresidential use and capable of having residential developments constructed above the existing building, as well as “underutilized” sites (which is not defined). APA California took an oppose position because such potential sites most likely would be infeasible (specifically related to air rights), or most likely could not be guaranteed to be developed within the planning period depending on what the current use of the “underutilized site” is and when it might be available for development. This bill will likely be amended to remove the sections related to “underutilized sites” and require HCD to instead add guidelines and advice to local governments related to air rights and underutilized sites in HCD’s annual Building Blocks manual.

Position: *Oppose unless Amended*

Location: *Assembly Floor*

AB 2299 (Bloom) – Mandatory Second Unit Ordinances and Reduced Parking Requirements

This bill would require a local agency to provide by ordinance for the creation of second units in single-family and multifamily residential zones. It would also prohibit the imposition of additional parking for a second unit that is located within one-half mile of public transit or shopping or is within an architecturally and historically significant district. APA California has no concerns with the majority of the bill and supports the use of second units as a source of affordable housing. However, we have requested that the bill be amended to use the parking standard in AB 744 (Chau, 2015). That language strikes a balance by providing for substantially reduced parking requirements to encourage housing near true active transit - without overburdening surrounding developments with spillover parking. The AB 744 amendment allows for reduced parking requirements: *if the development is located within one-half mile of a major transit stop and there is unobstructed access to the major transit stop from the development.* We anticipate this language to be amended into the bill soon.

Position: *Support if Amended*

Location: *Assembly Floor*

AB 2501 (Bloom) – New Density Bonus Requirements

AB 2501 makes a number of substantial changes to the density bonus law. A number of

provisions opposed by APA in the original version of the bill have been removed, including a requirement that the local agency make a written determination on whether the applicant’s application is complete within 30 calendar days of receipt, and a determination of an application for a density bonus with 60 calendar days. However, the bill still requires any density calculation that results in fractional units to be rounded up to the next whole number, and most importantly removes the ability of the local agency to ask the developer for financial information relating to the need for a requested concession, incentive or waiver. APA is working with the housing advocates sponsoring this bill to put back in the ability for a local agency to request that financial information and on several other issues of concern.

Position: *Oppose Unless Amended*

Location: *Assembly Floor*

AB 2502 (Mullin) – Inclusionary Housing Programs

This bill would amend that state’s Planning and Zoning Law to make it clear that inclusionary zoning is a permitted land use power in light of the Palmer decision. APA California is supporting this bill because it is one of very few but important options available to local governments to increase the supply of affordable housing in California.

Position: *Support*

Location: *Assembly Floor*

AB 2522 (Bloom) – By Right Housing

To help address the increasing lack of affordable housing in California, APA California is sponsoring AB 2522 to speed up approvals of housing projects proposed on sites already identified by the local agency, and at the densities specified in the agency’s housing element. AB 2522 mandates that certain attached housing developments be a permitted “use by right”. To ensure reasonable local control over by-right sites, the attached housing must meet all of the following ministerial criteria:

1. Is either located on a site identified in the housing element inventory, or is located on a site that has been or will be rezoned pursuant to the local jurisdiction’s housing element program.
2. Does not contain more dwelling units than were projected by the jurisdiction to be accommodated on the sites and any density bonus for which the development is eligible.

3. Complies with applicable, objective general plan and zoning standards and criteria, including design standards, in effect when the attached housing development was determined to be complete.
4. Is either located in an urbanized area or located on an infill site.
5. Contains 20% of its units for lower income households, or 100% for moderate-income households.

As mentioned above, the Governor has now endorsed as part of his budget package a much broader by right proposal that is not supported by APA as written. However, we have agreed to work with the Governor, HCD and the budget committees with the goal to pass a more targeted by right bill this year.

Position: *Support*

Location: *Working with the Governor on a more targeted by right proposal*

AB 2734 (Atkins) – Local Control Housing Funding Act

This bill requires the Department of Finance to calculate the savings to the state attributable to the elimination of redevelopment agencies and provide 50% of that amount, or \$1 billion, whichever is less, to HCD to provide funding to local agencies for housing. This is Assembly Member Atkins’ third attempt to establish a permanent source of funding for affordable housing. APA California continues to support her efforts as we have in the past. APA is also supporting the Senate’s proposal to redirect mental health funding for supportive housing, and other budget proposals providing various sources of funding for affordable housing.

Position: *Support*

Location: *Assembly Suspense File*

SB 876 (Liu) – The Right to Rest Act

This bill would have prohibited cities and counties from enacting or enforcing laws that ban resting in public spaces. It would have also specifically provided that persons experiencing homelessness have the right to use any public space without discrimination based on their housing status. While the bill was well intended, APA California doesn’t believe that allowing the homeless to rest in public spaces will help meet state and local goals to get people the help they need to end the homeless cycle. APA California does support Senate and Assembly efforts to assist local agencies with homeless resources. Senator de Leon’s recent “No Place

Like Home” proposal, for example, will provide much needed funding for mentally ill homeless as well as changes to existing shelter resources. After two attempts to get this bill out of the Senate Transportation and Housing Committee, the Senator failed to get enough votes to pass the bill and the bill was held in the committee.

Position: Oppose

Location: Dead

SB 1000 (Leyva) – Mandatory Environmental Justice Element in the General Plan

This bill would add a new Environmental Justice Element to the already existing seven elements in the general plan law. The bill would require that the new element identify disadvantaged communities within the jurisdiction and objectives and policies to reduce health risks. APA California supports amending local general plans, taking into account OPR’s new guidelines related to environmental justice, to include environmental justice goals and policies. However, APA cannot support a new and unfunded state mandate to include a new element within the general plan, opening up the general plan law to mounting legislative requests for many other stand alone elements in future years. Updating the general plan to add a brand new element is extremely expensive, requiring not just the adoption of the new element, but also

a review of the general plan and underlying zoning to ensure internal consistency between each of the required elements. APA California has offered amendments that would require local jurisdictions to include environmental justice goals, policies and objectives, but allow the local agency to determine whether they would be included within an existing element or elements or related document, or in a stand alone element. APA has also requested an amendment allowing these changes to be adopted or reviewed either upon the next major revision of the general plan involving two or more elements, or upon the adoption or revision of the housing element, as determined by the local agency, on or after January 1, 2018. In spite of APA’s support of the goal of the bill, if the Senator does not accept these amendments, APA California will move to an oppose position.

Position: Support if Amended

Location: Senate Appropriations Suspense File

SB 1069 (Wieckowski) “Accessory Dwelling Units” Ordinances and Reduced Parking Requirements

This bill would change the name of “second units” to “accessory dwelling units” and require a local agency to provide by ordinance for the creation of accessory dwelling units in single-family and multifamily

residential zones. It would also prohibit the imposition of additional parking for an accessory dwelling unit that is located within one-half mile of public transit or shopping or is within an architecturally and historically significant district. This bill is very similar to AB 2299. APA California has taken the same position - supporting second units as a key source of affordable housing but asking that the bill be amended to use the parking standard in AB 744 (Chau), signed into law in 2015. The parking standard in AB 744 strikes a balance by providing for substantially reduced parking requirements to encourage housing near true active transit - without over-burdening surrounding developments with spillover parking. That definition of active transit allows for reduced parking requirements if the development is located within one-half mile of a major transit stop and there is unobstructed access to the major transit stop from the development. At this point, Senator Wieckowski has not accepted APA’s amendment, so APA is considering moving to an oppose position.

Position: Support if Amended

Location: Senate Floor

JT, SG, LDS

For a copy of the budget trailer bills, go to: http://www.dof.ca.gov/budgeting/trailer_bill_language



24th Annual Sierra Retreat

Join the Central Section **August 26th - 28th** for the 24th Annual Sierra Retreat at beautiful Lake Sequoia, just outside the entrance to Kings Canyon National Park in Fresno County.

Activities offered include boating, hiking, swimming, fishing, and calm nights by the camp fire! An AICP-credit eligible professional development program is also included.

Get details and registration info at:
www.cencalapa.org



The history and future of complete streets will be the focus of a fall colloquium by the Los Angeles Region Planning History Group. Here, pedestrians, cyclists and motorized vehicles share Broadway in front of Downtown Los Angeles' Grand Central Market. Source: Allyn Rifkin

J. LAURENCE MINTIER, FAICP | Chapter Historian, Northern
STEVEN A. PRESTON, FAICP | Chapter Historian, Southern

There's History in the Art and Craft of Planning

Those with an appreciation for history - whether the history of the planning movement or the progressive historic preservation initiatives taking shape throughout the state - can get their fill at this year's APA California Conference, October 22-25 at the Pasadena Convention Center. And there's a great upcoming colloquium on the topic of Complete Streets you'll want to put on your calendar.

Day-Long Historic Preservation Short Course Launches the Conference

There's no better place to tackle preservation than Pasadena, which has been a national leader in the preservation movement for more than 35 years. And if you're there on Saturday, October 22 we have just the event for you.

A day-long, pre-conference workshop on historic preservation will feature some of Southern California's leading preservation voices from government, private practice and the nonprofit sector helping preservation planners at all levels enhance their skills, exchange ideas with leaders in the field, and discuss the latest trends and innovations. We're working with Pasadena Heritage, one of California's leading preservation organizations, to conduct this six-hour course (CM: 6.0). Full details will be available with your conference registration.

Save the Date: History of the Complete Streets Movement

As part of its Saturdays at The Huntington

Library Colloquia series, the Los Angeles Region Planning History Group (LARPHG) will present its thirteenth Colloquium:

Rights of Way, or Wrongs of Way? An examination of the Complete Streets Movement

Its organizers note, "the Complete Streets movement has linked health and urban planning to the transportation equation and planners are now facing how to re-capture the public street rights of way for pedestrians, bicycles and public transit. Come hear about the history of Complete Streets in Southern California and the future of our transportation rights of way."

Saturday, September 10, 2016 • 9 am - 2 pm
Huntington Library, 1151 Oxford Road,
San Marino, CA 91108

\$50 general; \$35 if student

Includes continental breakfast and lunch

For details, visit the LARPHG at

www.larphg.com

Visit the Chapter History Exhibit at This Year's Conference

Come drop by the Chapter Historian's table at this year's APA California conference in Pasadena. Each year, local planners from the community where the conference is held help assemble an exhibit documenting some aspect of the history of California planning. These exhibits have been wide-ranging including a video history of San Diego's Nolen Plan; an array of antique Central Valley land plat maps; a selection of historical planning reports from

the California Chapter archive; and California's Planning Landmark Award-winning submittal on the Bennett Plan. This year's exhibit is being developed in conjunction with our colleagues at the Los Angeles Region Planning History Group.

Planner Emeritus Network Sponsors Events at Conference

The Planner Emeritus Network's (PEN) annual panel will be held on Sunday morning during the 2nd time slot from 9:45 am to 11:15 am (check your final conference schedule). The very timely and exciting topic will be **"The Urban Resurgence of Inglewood: How Master Planning and Economic Development Goals Meet."** This panel will explore the complex planning process that has led to the urban resurgence of the City of Inglewood that is being driven by three major forces: 1) a major, mixed use development at the former Hollywood Park site; 2) the future arrival of the NFL Rams pro football stadium and related entertainment and commercial uses; and, 3) the arrival of light rail transit through the northern section of the city that is sparking revitalization of the downtown commercial core and civic center. Also, in the afternoon on Sunday from 3:00 pm to 4:45 pm in Room 205, PEN will hold its annual Board meeting. Conference attendees are welcome.

New This Year: Direct Donations Now Available the California Chapter Planning Archives

Since 1998, the California Chapter has worked in conjunction with the California State University at Northridge to provide an archive documenting the history of the State's planning movement through its reports, documents, and the records of APA California and its affiliates. But maintaining an archive is resource intensive and costly, and so for the first time this year attendees at the APA California conference will have the option of donating directly to the archive when they register. Watch for this new option, and join the expanding circle of those who are researching and documenting our shared history. Or if you would like more information about the APA California archives, contact Steve Preston at spreston@sgch.org, or Larry Mintier at mintierassociates@gmail.com.

Cal Poly Pomona Announces Scholarship

The College of Environmental Design at Cal Poly has announced the creation of the Margarita McCoy Memorial Scholarship in honor of Margarita Piel McCoy, FAICP, honoring the memory of "a planning pioneer, academic, and advocate for community transformation." The scholarship will benefit female students of urban and regional planning. Checks may be made out to the Cal Poly Pomona Foundation, Inc. and should on the memo line note, "Margarita McCoy Memorial Scholarship." They may be mailed to Carrie Guerts, College of Environmental Design, Cal Poly Pomona, 3801 W. Temple Ave., Pomona, CA 91768.

JM, SP

California Planning Foundation Seeking Donations: Contributions Fund Scholarships for Future Planners

WE NEED YOUR HELP to ensure that young people drawn to planning are able to fund their education. For summer of 2016, we set a fundraising goal of \$5,000. We need individual donors and sponsors!

Secure credit card and PayPal donations can also be made online at:

<http://www.californiaplanningfoundation.org/donations.html>.

All donations will be acknowledged at the CPF Auction (October 23, 2016 at the APA California Planning Conference in Pasadena, CA), and will receive a special "thank you" on the CPF website (<http://www.californiaplanningfoundation.org/>). All Sustaining Level Sponsors receive scholarship naming privileges for their donation. All Corporate Sponsor level donations and Friend of CPF level donations include the placement of a calling card advertisement and link to your homepage on the CPF website. CPF donations are tax deductible and a copy of CPF's W-9 Tax Identification Certification will be sent to you with a donation letter/receipt for your tax and accounting purposes.



American Planning Association
California Planning Foundation

California Planning Foundation Virginia Viado and Ted Holzem 2016 Scholarship Auction

CPF 2016 SCHOLARSHIP AUCTION DONATIONS

Yes! I'd like to donate the following item:

Please provide complete item description below: Estimated Value: \$ _____

Auction/raffle item **descriptions and electronic images** of items must be submitted and delivery of all items must be made to Wendy Nowak by 5:00 pm, Wednesday, October 19 (or 10:00 am on Sunday, October 23, if prior arrangements have been made for delivery at the Conference site.).

☐ Please contact me for pick-up/drop-off options ☐ I will bring item to Pasadena

Name of Company: _____

Address: _____

Phone No. _____ Contact Person: _____ Website: _____

Please return form to: **Wendy Nowak, AICP, Placeworks, 3 MacArthur Place, Suite 1100, Santa Ana, CA 92770**
wnowak@placeworks.com

DONATE OR BECOME A CPF SPONSOR

The California Planning Foundation (CPF) is a nonprofit, charitable corporation established to further the professional practice of planning in California. CPF achieves this goal by giving annual scholarships and awards to university students in financial need, who have demonstrated academic excellence at planning programs throughout California. Another vitally important CPF activity is the sponsorship of workshops, publications and other continuing educational and professional development programs. All members of APA California are automatically members of the CPF. Although APA California members pay annual dues to belong to APA California and the national American Planning Association, there are no separate dues to belong to CPF. Individual donors and corporate sponsors help us continue this important tradition of supporting student planners and CPF activities.

Yes! I'd like to become a Donor or a Sponsor of the California Planning Foundation: (check appropriate box)

DONOR LEVELS

- ☐ Friend of CPF: \$300 or more ☐ Financial Aid Associate: \$200 or more ☐ Student Advocate: \$100 or more
- ☐ Scholarship Supporter: Less than \$100 (all CPF donations are greatly appreciated)

SPONSOR LEVELS

For companies and organizations, please consider becoming an annual Sponsor of CPF by joining or renewing at one of the levels below, or please consider joining at the Sustaining Level to sponsor a reoccurring CPF scholarship over the next five years (please check one).

- ☐ Sustaining Level Sponsor - \$5,000 minimum (donation is awarded over the next 5 years)
- ☐ Platinum Level Sponsor - \$2,000 or more ☐ Gold Level Sponsor - \$1,500
- ☐ Silver Level Sponsor - \$1,000 ☐ Bronze Level Sponsor - \$500

Name of Company: _____

Address: _____

Phone No. _____ Contact Person: _____ Website: _____

Please return form to: **Laurie Gartrell, CPF Treasurer, 401 B Street, Suite 800, San Diego, CA 92101**
Or pay online at www.californiaplanningfoundation.org/donations/html

DOWNLOAD THE DONATION FORM TOO!



JUAN BORRELLI AICP | CPF President

CPF Needs Auction Items for Conference Reception Fundraiser

The California Planning Foundation (CPF) is a nonprofit, charitable corporation with the goal of furthering the professional practice of planning in California. WE NEED YOUR HELP to ensure that young people drawn to planning are able to fund their education. Last year, CPF awarded over 34 scholarships totaling more than \$50,000 to planning students throughout California. Our primary fundraising activity is the annual Scholarship Auction held at the APA California Conference. This year the auction will be held in Pasadena in honor of Virginia Viado and Ted Holzem, on Sunday, October 23, 2016.

We are looking for things for our live and silent auction, such as:

- gift cards or gift baskets
- restaurant gift certificates
- weekend at your cabin or beach house
- day of consulting services
- tickets to sporting events
- family heirlooms designated to pass on
- planning books
- art work
- movie tickets
- bottles of wine

Every member of APA is a member of CPF so please help! To donate an item, please fill out the donation form and send to Wendy Nowak, AICP at wnowak@placeworks.com or call (714) 966-9220.





www.migcom.com

LAMPHIER - GREGORY
URBAN PLANNING & ENVIRONMENTAL ANALYSIS



1944 Embarcadero
Oakland, CA 94606
510 535 6690
510 535 6699 fax

DYETT & BHATIA
Urban and Regional Planners

dyettandbhatia.com General Plans
755 Sansome St. Suite 400 Urban Design
San Francisco, CA 94111 Specific Plans
415.956.4300 Zoning
Environmental Planning



Ken Ryan
Planning Principal
kryan@ktgy.com
949.812.1361
ktgy.com
Architecture+Planning

DUDEK

Natural Resources
Management &
Environmental Planning

PLAN | DESIGN | PERMIT | CONSTRUCT | MANAGE

Dudek.com

San Diego
San Juan Capistrano
Riverside
Palm Desert
Los Angeles
Santa Barbara
Sacramento
Auburn
San Francisco

GRUENASSOCIATES

Architecture Master Planning
Urban Design Specific Plans
Transportation Planning Transit-Oriented Development
New Community Planning Campus Planning
Community Participation Landscape Architecture

carbrey@gruenassociates.com tel 323 937 4270
www.gruenassociates.com fax 323 937 6001
6330 San Vicente Blvd., Suite 200, Los Angeles, CA 90048

Heffernan Professional Practices

Specialists in Insurance for
Planning Professionals

Marsha Bastian 6 Hutton Centre Dr., Ste. 500
marshab@heffins.com Santa Ana, CA 92707
714.361.7716 hpiib.com

mintierharnish
Planning Tomorrow Today®



Planning and Project Services | Legal Support
Issues Research and Management
GIS, Graphics, and Mapping

www.mintierharnish.com (916) 446-0522

BBK **BEST BEST & KRIEGER**
ATTORNEYS AT LAW

BB&K is the largest and most experienced full-service
municipal and public agency law firm in California.
We offer clients unique experience in handling complex
planning, building and redevelopment issues.

Offices throughout California, please visit BBKlaw.com

Introducing **PlaceWorks**
Formerly The Planning Center | DC&E

New name. Expanded opportunities.

PlaceWorks is one of California's
leading environmental, planning,
and design firms, working to inspire,
imagine, and create great places for
more than forty years.



PLACEWORKS
Learn more at placeworks.com

EMC PLANNING GROUP INC.
A LAND USE PLANNING & DESIGN FIRM

Community Planning • Municipal Staff Support • CEQA/NEPA Compliance
Permitting & Regulatory Compliance • Climate Change • Visual Simulations
Natural Resources Assessment • GIS/Mapping • Development Feasibility

www.emcplanning.com • 831.649.1799 • Monterey, CA

PCR
SERVICES CORPORATION

Environmental Planning & Documentation
Biological Services
Air Quality & Climate Change
Acoustics
Archaeological & Paleontological Resources
Historic Resources

Santa Monica TEL 310.451.4488 Irvine TEL 949.753.7001 Pasadena TEL 626.284.6170 www.pcrnet.com

LSA

LSA ASSOCIATES INC.

www.lsa-assoc.com

PLANNING | ENVIRONMENTAL SCIENCES | DESIGN

rrm
design group

specific plans
community planning
streetscapes
design guidelines
transit oriented design

planners • architects • engineers • landscape architects • surveyors
san leandro • san luis obispo • santa barbara • san juan capistrano
rrmdesign.com

TERRA NOVA®
PLANNING & RESEARCH, INC.

General Plans Regulatory Permitting
Specific & Master Plans Environmental Planning
Municipal Planning Services

♦ Palm Desert ♦ Colorado Springs

www.terravaplanning.com 760-341-4800

Michael Baker
INTERNATIONAL

We Make a Difference

Planning • Urban Development
Environmental Science • Surface Water
Transportation/Traffic
Water Resources • Structures
Survey/Mapping • Public Works

MBAKERINTL.COM

CAL PLANNER
IFORNIA

> Seeking New Sponsorship Strategies

Now that the new editorial format for the *CalPlanner* has been established, we are seeking suggestions from APA California's partners and sponsors on ways to better reach the Chapter membership. This means rethinking the traditional calling card ads for example, as well as all ad placement and associated links. So we need to hear from you on innovative ideas that would complement the new design and format while offering a more effective way to generate awareness for your business or service. We hope you will continue to support the *CalPlanner* and encourage your comments and ideas by contacting Marc at myplanning@live.com



American Planning Association
California Chapter
Making Great Communities Happen

For additional contact information, please go to www.apacalifornia.org

CHAPTER OFFICERS

Hing Wong, AICP
President | hingw@abag.ca.gov

Kristen Asp, AICP
VP Administration | kasp@glendaleca.gov

Betsy McCullough, AICP
VP Conferences | betsy92106@gmail.com

Greg Konar, AICP
VP Marketing & Membership
gregok@cox.net

John Terell, AICP
VP Policy & Legislation | jcterell@aol.com

Terry M. Blount, AICP
VP Professional Development
plannertothestars@yahoo.com

Marc Yeber, ASLA | **VP Public Information**
myplanning@live.com

Pete Parkinson, AICP | **President Elect**
pete.parkinson54@gmail.com

Juan Borrelli, AICP | **CPF President**
juan.borrelli@sanjoseca.gov

Scott Lefaver, AICP
Commission and Board Representative
lefaver@sbcglobal.net

Eric Tucker | **Student Representative**
etucker415@gmail.com

LOCAL SECTION DIRECTORS

Benjamin A. Kimball | **Central Section**
bkimball@tularecog.org

Christopher Williamson, AICP | **Central Coast Section**
chris.williamson@oxnard.org

Christopher J. Gray, AICP
Inland Empire Section
gray@wrcog.cog.ca.us

Ashley Atkinson | **Los Angeles Section**
atkinson.ashley@gmail.com

Andrea Ouse, AICP
Northern Section | andrea.ouse@cityofvallejo.net

Amy Stonich, AICP | **Orange County Section**
amys@lilleyplanning.com

Tracey Ferguson
Sacramento Valley Section
tferguson@nwhm.com

Gary Halbert, AICP
San Diego Section | ghalbert@chulavistaca.gov

APPOINTED MEMBERS

Kimberly Brosseau, AICP | **AICP Coordinator**
kimberly.brosseau@prk.sccgov.org

J. Laurence Mintier, FAICP
Chapter Historian, Northern
mintierassociates@gmail.com

Steven A. Preston, FAICP
Chapter Historian, Southern
spreston@sgch.org

David E. Miller, AICP
FAICP Coordinator dmiller@folsom.ca.us

Miroo Desai, AICP
Membership Inclusion Director, Northern
mdesai@emeryville.org

Anna M. Vidal
Membership Inclusion Director, Southern
anna.vidal@lacity.org

Christopher I. Koontz, AICP
National Policy & Legislative Representative
cikoontz@gmail.com

Carol D. Barrett, FAICP | **Program Director**
carolddbarrett@gmail.com

Michael Isles, AICP
State Awards Coordinator, Northern
misles@teichert.com

Mary P. Wright, AICP, LEED AP
State Awards Coordinator, Southern
wright@civicsolutions.com

Julia Lave Johnson | **University Liaison, Northern**
jjohnston@ca-ilg.org

Nicholas Chen | **University Liaison, Southern**
nick.chen@mbakerintl.com

Nina Idemudia | **Young Planners Coordinator**
ninaidemudia@gmail.com

Vacant
CalPlanner Assistant Editor

Aaron Pfannenstiel, AICP
Technology Director urbangeologist@gmail.com

NON-VOTING MEMBERS

Kurt Christiansen, FAICP
APA Board Director, Region 6
kchristiansen@ci.azusa.ca.us

Marissa Aho, AICP
AICP Commissioner, Region 6
marissaaho@gmail.com

Lance MacNiven
APA Student Representative, Region 6
lancemacniven@gmail.com

Stanley R. Hoffman, FAICP
Planner Emeritus Network, President
stan@stanleyrhoffman.com

Woodie Tescher
California Planning Roundtable President
wtescher@placeworks.com

PAGE & TURNBULL
www.page-turnbull.com

ARCHITECTURE | PLANNING & RESEARCH | PRESERVATION TECHNOLOGY

SACRAMENTO 916.930.9903	SAN FRANCISCO 415.593.3239	LOS ANGELES 213.221.1200
----------------------------	-------------------------------	-----------------------------

SWCA

- CEQA / NEPA
- Environmental Compliance
- Archaeology/Architectural History
- Biology
- Paleontology
- Wetlands

FRESNO
HALF MOON BAY
PASADENA
REDLANDS
SAN FRANCISCO
SAN LUIS OBISPO

www.swca.com | Sound Science. Creative Solutions.®

HR&A
Analyze. Advise. Act.

Keep Updated

Keep up to date with all the Chapter news, activities, programming and professional education as well as the State Conference by visiting the APA California website and LinkedIn discussion group. Also, remember your local Section's website and other media platforms are an additional resource.

CALPlanner Vol 16 • Issue 03



Join us this fall in Pasadena...On-line registration is open!



Soak Up History - Imagine the Future

Don't miss out on our **Conference Opening Reception** in the courtyard of the 1927 Pasadena City Hall. The Renaissance style building was designed by John Bakewell & Arthur Brown. For planners, the building might be even more famous as the City Hall for the fictional City of Pawnee, setting for the beloved NBC show Parks and Recreation. Be on the look-out for a special tribute to the show's stars.

The **Arroyos and Foothills Orientation Tour** promises to be a huge hit, led by local planners with a focus on the intriguing past, present, and future of Pasadena and its neighboring communities, including San Gabriel, Altadena, Highland Park, San Marino, and more.

Keynote Speakers

Robert Egger, charismatic leader of L.A. Kitchen, will share with us his vision of fresh solutions to solvable demographic and social issues, by ensuring that neither food nor people ever go to waste.



World renowned seismologist, Dr. Lucy Jones will present information on her recent effort with the City of Los Angeles and the creation of their Resilience By Design initiative, which addressed building retrofits, water reliability, and communication systems. She will share ways that communities and leaders can work toward a more resilient future.



See and Be Seen

There's still a chance to join your colleagues and **Sponsor the Conference**

Only a few premium booths are left.

The deadline for Sponsorship has been EXTENDED to August 31!

Thank You to Our Sponsors and Exhibitors

Ascent	HELIX Environmental Planning	PlaceWorks ★
BAE Urban Economics	ICF	Rincon Consultants, Inc.
Cabouchon Properties	Impact Sciences	University of Redlands
City of Ventura	Institute for Local Government	USC Ross Minority Program in Real Estates
Civic Solutions	Kimley-Horn	Veronica Tam and Associates
Dudek ★	LSA ★	Wildlands
ESA	M-Group	Willdan ★
Golden Associates Landscape Architects	Michael Baker International ★	
GPA Consulting ★	MIG, Inc.	5+ Year Sponsors ★



@APA2016CA

Check our website for more details www.APACalifornia-Conference.org